



Omnesys Technologies



Special Order Types In Nest Trader

Table of Contents

How to place a Cover Order ?	3
How to place Bracket Order ?.....	3
How to trade through Smart Order ?.....	5
How can I enter Trigger Order ?.....	5
How to place Spread Order?.....	6
How to place After Market Orders?.....	7
How To Enter After market Basket Orders ?.....	7

How to place a Cover Order ?

You can click on cover order entry under the menu orders and trades or can use the short cut key Shift + F1 for buying cover order and Shift + F2 for selling cover order.

Buy Cover Order Entry	Shift+F1
Sell Cover Order Entry	Shift+F2

Fig: Cover Order Entry Window with short cut in the right hand side

Fig: Cover Order Entry Window

This order gives cover to every buy order with a stop loss order. Order placed is always at the market price.

How to place Bracket Order ?

Click on **Bracket Order Entry** under **Orders And Trades** menu.

One can enter three orders in a single window which includes:

1. Buy Orders-Buy
2. Sell Orders
3. Stop Loss Order

Bracket Order Entry	▶	Buy Bracket Order Entry	Shift+F3
Trigger Order Entry	▶	Sell Bracket Order Entry	Shift+F4

Fig: Bracket Order Entry Option Window

Fig: Buy Bracket Order Entry Window

Fig: Sell Bracket Order Entry Window

This order type is used to define buy, sell and Stop Loss orders.

Buy order can be defined on the basis of

1. **Market Order**
2. **Limit Order**

Sell and stop loss order can be defined on the basis of:

1. **LTP** – Last Traded Price of your order
 1. **Absolute** – On the absolute value
 2. **Ticks** – Need to specify the number to ticks after which you want to square off.
2. **ATP** – Average Traded Price of your order
 1. **Absolute** – On the absolute value
 2. **Ticks** – Need to specify the number to ticks after which you want to square off.

How to trade through Smart Order ?

Click on **Smart Order Entry** under **Orders And Trades** menu.

With the help of this one can trade on the best price available in either of the two exchanges:

1. **NSE** and
2. **BSE**

Smart Order Entry		Buy Smart Order Entry	Ctrl+Alt+A
Spread Order	Ctrl+Shift+F1	Sell Smart Order Entry	Ctrl+Alt+Q

Fig: Smart Order Entry Option Window

Buy Smart Order Entry - SHASHANKTIWARY-OTPUAT

Unique Key	Order Type	Validity	Product Type	Qty	Price
ACC	LIMIT	DAY	NRML		

Pro/Cli: CLI Client Id: 0000000000-OTPU Client Name: dfgfg

Submit

Fig: Buy Smart Order Entry Screen

Sell Smart Order Entry - SHASHANKTIWARY-OTPUAT

Unique Key	Order Type	Validity	Product Type	Qty	Price
ACC	LIMIT	DAY	NRML		

Pro/Cli: CLI Client Id: 0000000000-OTPU Client Name: dfgfg

Submit

Fig: Sell Smart Order Entry Screen

How can I enter Trigger Order ?

Click on **Trigger Order Entry** under the menu **Orders and Trades**.

One can place conditional orders based on set conditions.

Trigger Order Entry		Buy Trigger Order Entry	Alt+B
Smart Order Entry		Sell Trigger Order Entry	Alt+S

Fig: Trigger Order Entry Option Window

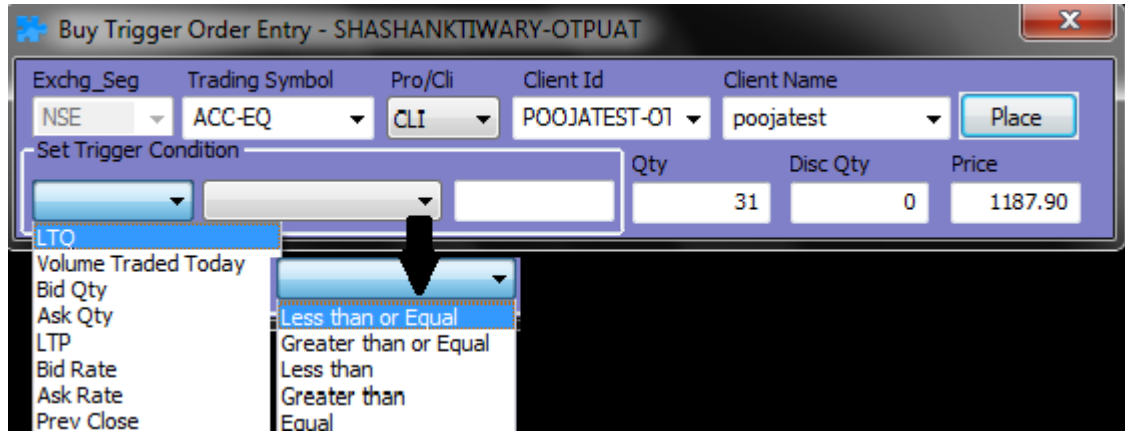


Fig: Buy Trigger Order Window With Set Trigger condition

How to place Spread Order?

Click On **Spread Order** under **Orders and Trades** menu.

You can click on the **Order type** to enter the type of spread for a particular order :

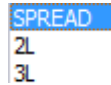


Fig: Types of spread

Note: For 2L and 3L spread type validity is only IOC (Immediate or Cancel)

Day is valid only for single leg spread order.

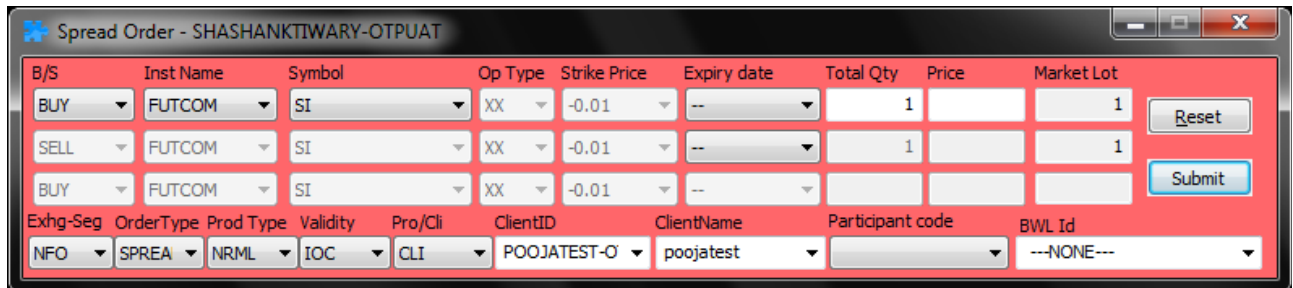


Fig: Buy Spread Order

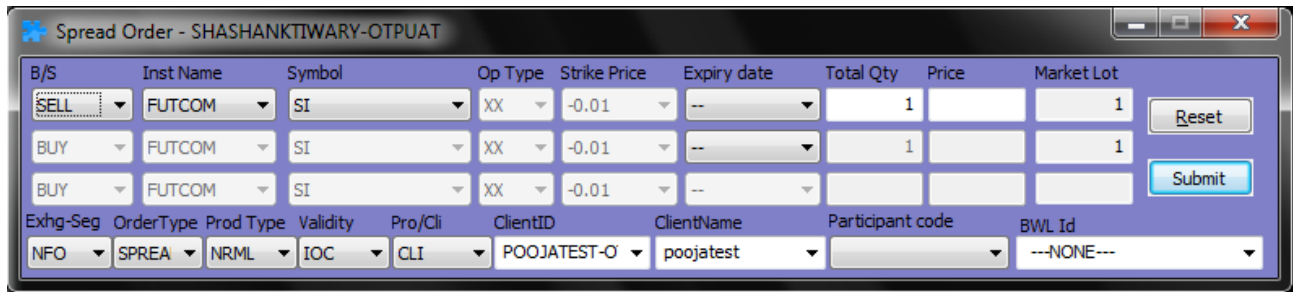


Fig: Sell Spread Order

How to place After Market Orders?

Click On After Market Orders under Orders and Trades menu.

After Market Orders	▶	Buy Order Entry	Ctrl+F1
Cover Order Entry	▶	Sell Order Entry	Ctrl+F2
Bracket Order Entry	▶	Basket Orders	Alt+Shift+O

Fig: After Market Orders menu

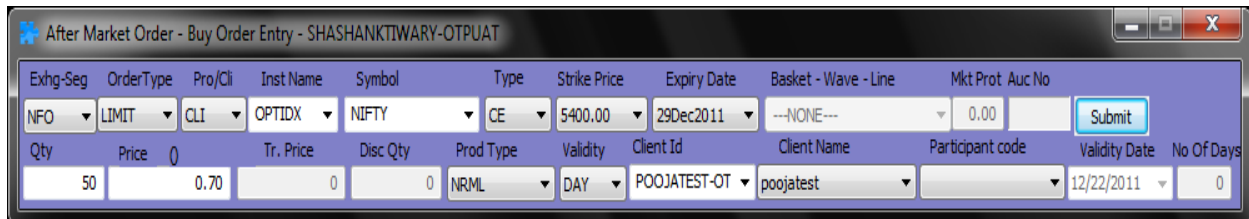


Fig: After Market Order Entry Window

How To Enter After market Basket Orders ?

Click On After Market Orders under Orders and Trades menu. Then click on Basket Orders.

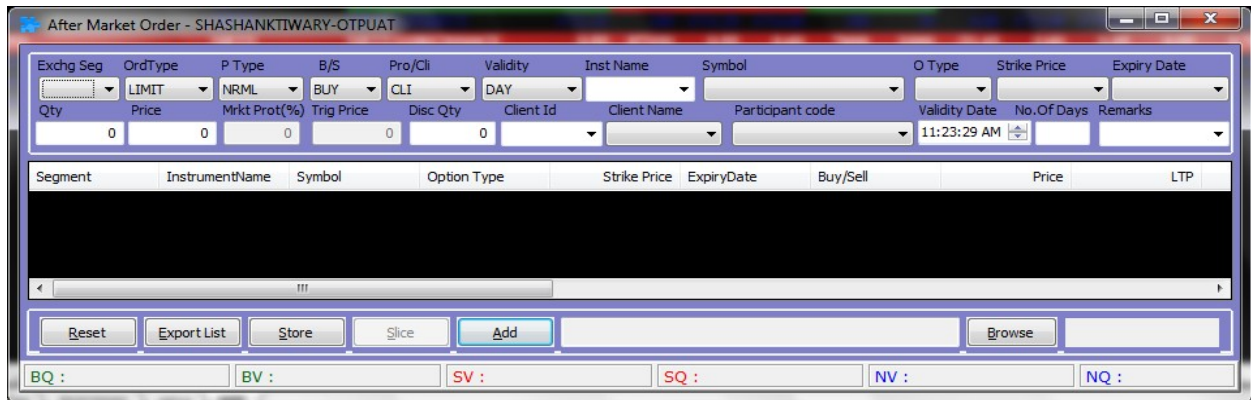


Fig: After Market Basket Order

In After market basket orders one can **Export** and **Import** list with the help of **Export List** and **Browse** options simultaneously.