



Omnesys Technologies



Advanced Features In Nest Trader

Table of Contents

How to rearrange the market watch columns ?	3
How to Load Predefined Market Watch ?.....	3
How to set conditional market watch ?.....	3
What is "MW Groups" ?.....	4
How to apply the condition ?	4
How to apply Greeks in market watch ?.....	4
How to view combined market depth ?.....	6
What are the various charts used by the investors ?.....	6
How to invoke Intraday charts?.....	6
How to invoke historical charts?.....	7
How to invoke comparative charts?.....	7
How to change chart style?	9
How to draw study line in a chart?.....	9
How to add technical indicators in charts?	9
How to add indicator in charts?.....	11
How to invoke price ladder?.....	11
How to use Model Basket?.....	12
Add/Delete/Edit Model Basket.....	12
Model Basket order Entry.....	12
Alert.....	13
How to set alert for a particular condition?.....	13
How to modify or cancel alert?.....	14
How to set order alert?.....	14
How to modify or cancel order alert?.....	15

How to rearrange the market watch columns ?

Right click on market watch profile header and select from the **drop down list** which includes (Select reposition columns for repositioning the column):

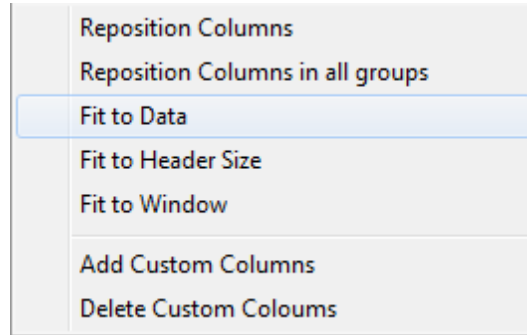


Fig: Drop down list

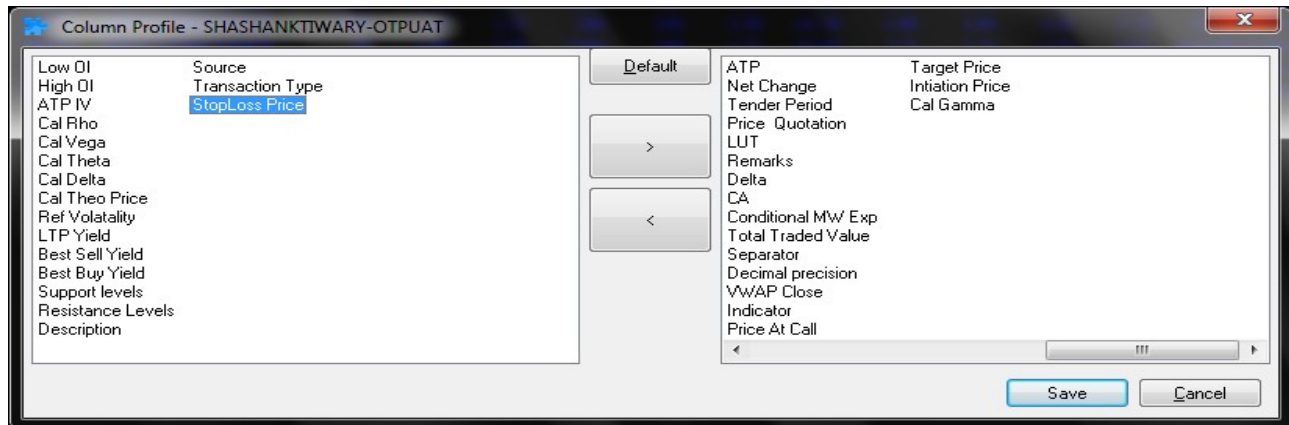


Fig : Column Profile window to reposition column

How to Load Predefined Market Watch ?

Click On **LoadPredefined Market Watch** Under **Market** Menu.

How to set conditional market watch ?

Click on **Conditional Market Watch** under **Market** menu.

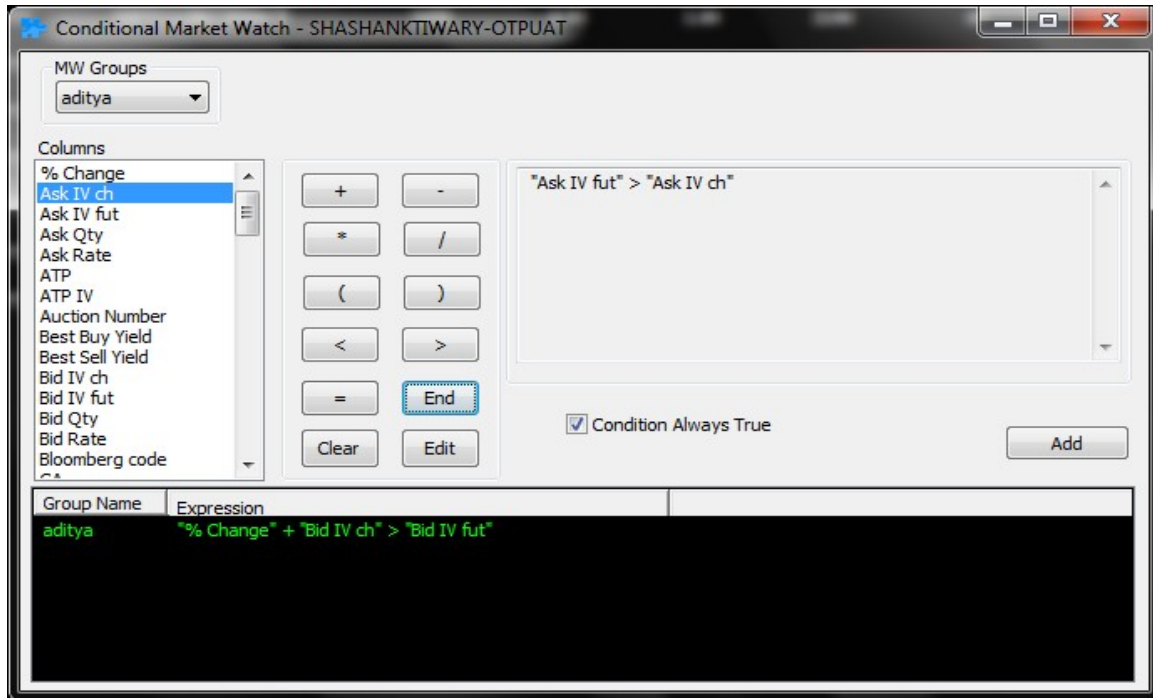


Fig: Conditional Market Watch

What is "MW Groups" ?

This drop down list shows names of the market watch groups saved in market watch group settings.

One has to select the name of that market watch group and set conditions on that.

How to apply the condition ?

Click on **Add** to apply the condition on the selected market watch.

This will be shown in the screen below.

How to apply Greeks in market watch ?

Click on reposition column and add the greek column to the market watch.

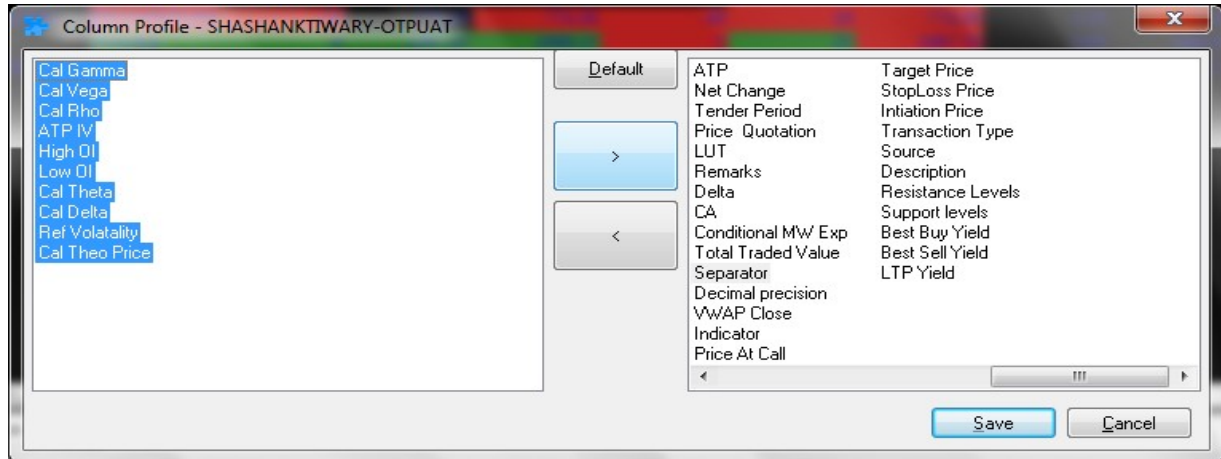


Fig: Greeks in reposition column (All the greeks where shown in blue)

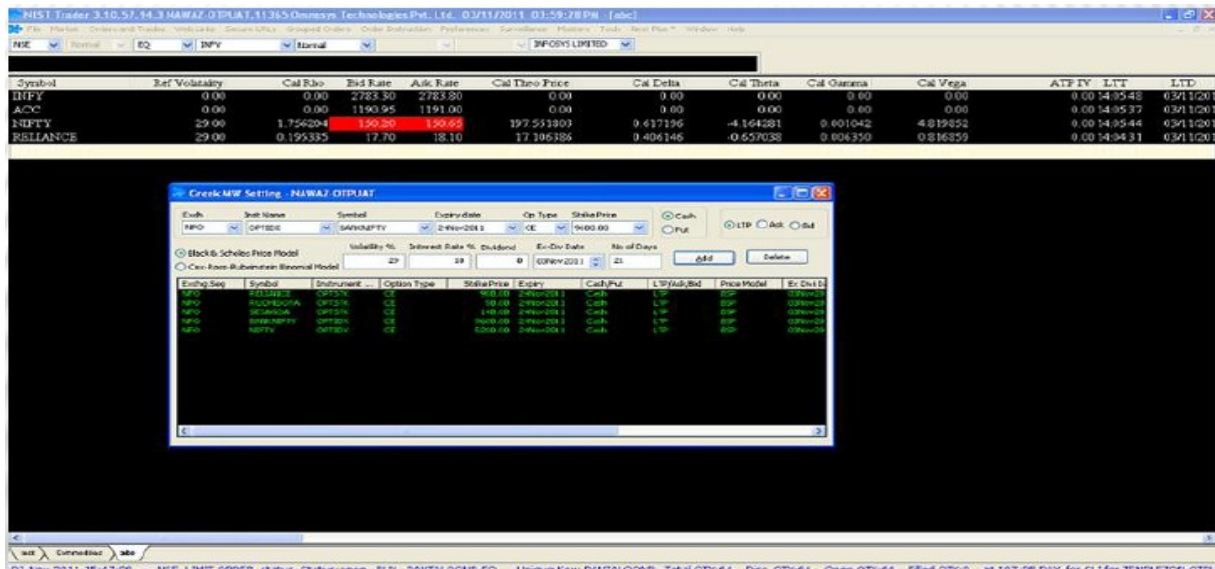
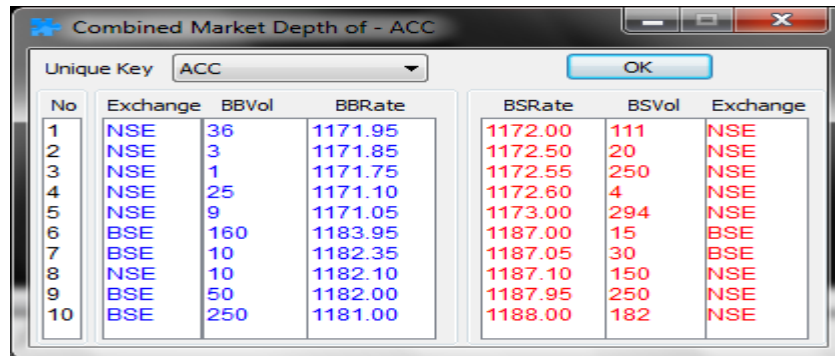


Fig: Greeks in market watch

How to view combined market depth ?

Click on combined market depth under market menu or press Ctrl+Alt+F6



No	Exchange	BBVol	BBRate	BSRate	BSVol	Exchange
1	NSE	36	1171.95	1172.00	111	NSE
2	NSE	3	1171.85	1172.50	20	NSE
3	NSE	1	1171.75	1172.55	250	NSE
4	NSE	25	1171.10	1172.60	4	NSE
5	NSE	9	1171.05	1173.00	294	NSE
6	BSE	160	1183.95	1187.00	15	BSE
7	BSE	10	1182.35	1187.05	30	BSE
8	NSE	10	1182.10	1187.10	150	NSE
9	BSE	50	1182.00	1187.95	250	NSE
10	BSE	250	1181.00	1188.00	182	NSE

Fig : Combined market depth of ACC

What are the various charts used by the investors ?

Following are the types of charts are used by the investors:

1. Intraday charts
2. Historical charts
3. Comparative charts

How to invoke Intraday charts?

Right click on a particular scrip and select intraday charts.

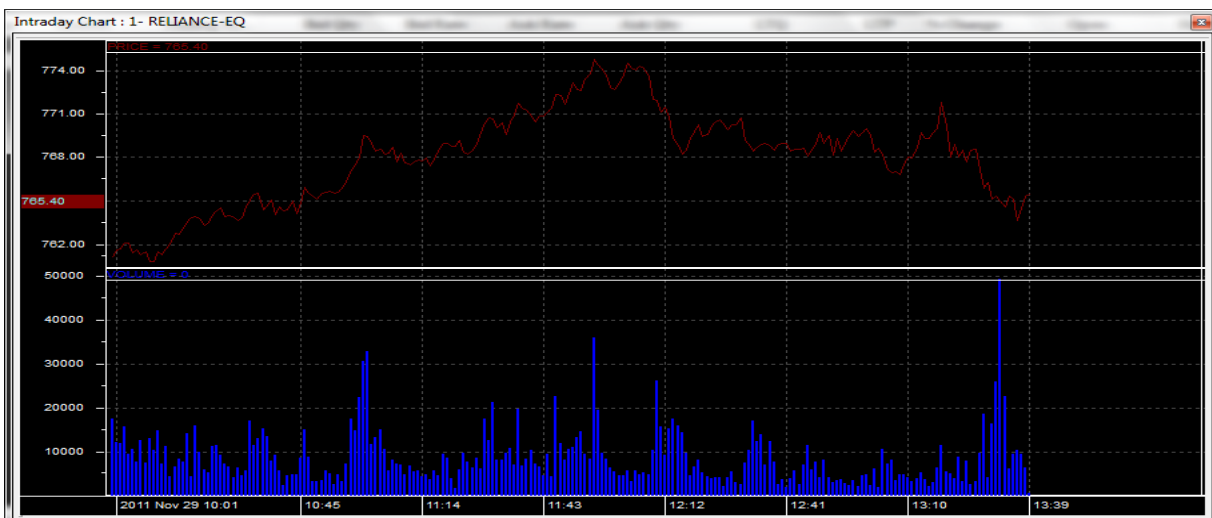


Fig: Intraday Chart

How to invoke historical charts?

Right click on a particular scrip and select historical charts.



Fig: Historical Chart

How to invoke comparative charts?

Right click on a particular scrip and select comparative charts.



Fig: Comparison between BHEL and ACC

- Lock Scrip
- Style ▶
- Price Style ▶
- Study Lines ▶
- Symbols ▶
- Remove Symbols ▶
- Interval ▶
- Add Indicator ▶
- Show Volume Panel
- Save as Bitmap
- Save as Template
- Upload Template
- Preference Settings
- Data Table
- Three D Style
- Display Darvas Boxes
- Show Wide Candles

Fig: Right Click On Charts will give you following options

How to change chart style?

Right click on charts and then click on the style option, you will get the following options to change the style of the chart:

Style	▶	<input checked="" type="checkbox"/>	Line
Price Style	▶		Bar
Study Lines	▶		Candle
Symbols	▶		Standard
Remove Symbols	▶		StandardHLC

Fig: Various chart styles

How to draw study line in a chart?

Right click on charts and then click on the study line option, you will get the following options to draw study lines:

Study Lines	▶		Ellipse
Symbols	▶		Rectangle
Remove Symbols	▶		TrendLine
Interval	▶		SpeedLines
Add Indicator	▶		GannFan
<input checked="" type="checkbox"/> Show Volume Panel			FibonacciArcs
Save as Bitmap			FibonacciFan
Save as Template			FibonacciRetracements
Upload Template			FibonacciTimeZones
Preference Settings			TironeLevels
Data Table			QuadrantLines
<input checked="" type="checkbox"/> Three D Style			RaffRegression
Display Darvas Boxes			ErrorChannel
			Horizontal Line

Fig: Various study lines

How to add technical indicators in charts?

Charts can be analyzed through various technical indicators present in the **Add Indicator** column on right clicking on the chart

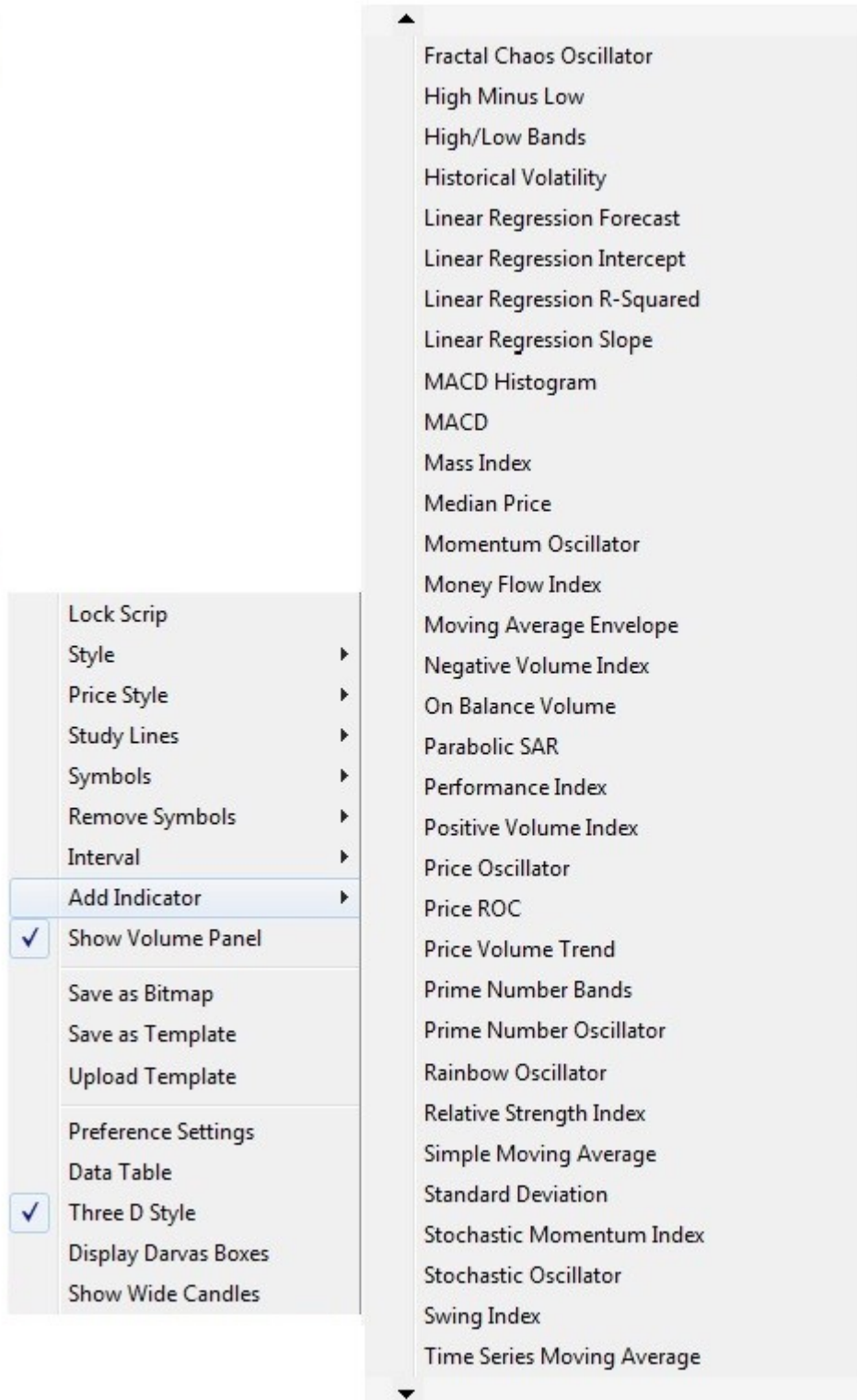


Fig: List of Indicators

How to add indicator in charts?

Click on the indicator and click on the Apply button to add the indicator in chart.

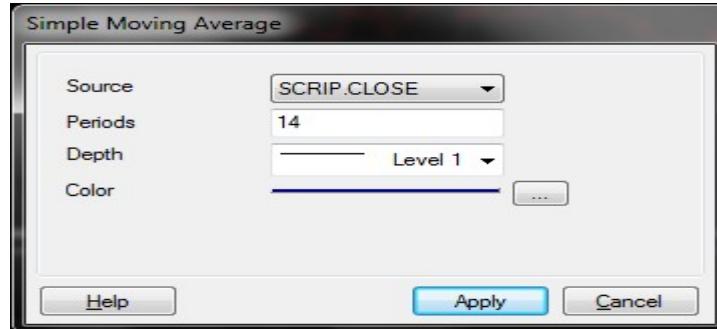
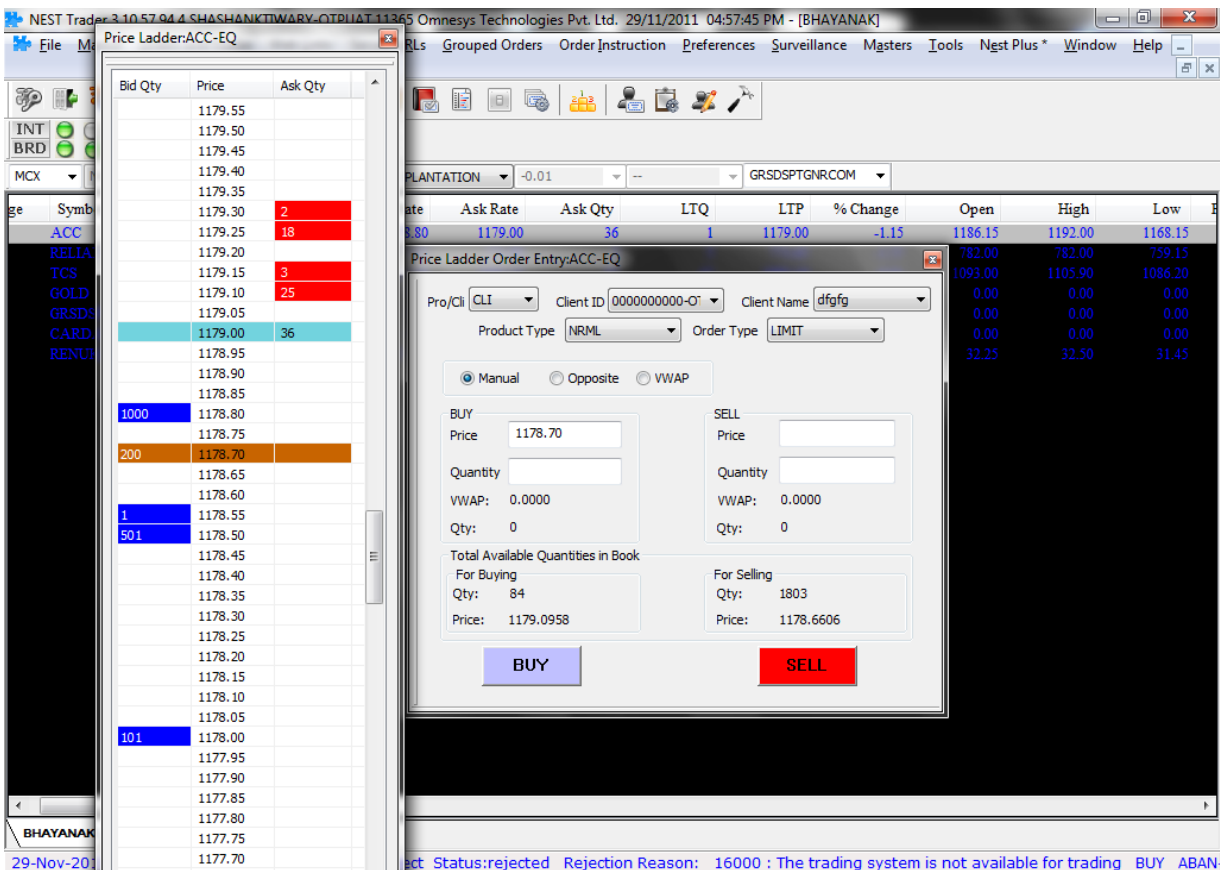


Fig: Window to apply the indicator

How to invoke price ladder?

Click on the price ladder option under the market menu.

This shows Bid and Ask price as well as quantity. It is easy to buy or sell looking at the prevailing price and entering the order simultaneously.



Bid Qty	Price	Ask Qty
	1179.55	
	1179.50	
	1179.45	
	1179.40	
	1179.35	
	1179.30	
	1179.25	2
	1179.20	18
	1179.15	
	1179.10	3
	1179.05	
	1179.00	25
	1178.95	
	1178.90	
	1178.85	
1000	1178.80	
	1178.75	
200	1178.70	
	1178.65	
	1178.60	
1	1178.55	
501	1178.50	
	1178.45	
	1178.40	
	1178.35	
	1178.30	
	1178.25	
	1178.20	
	1178.15	
	1178.10	
	1178.05	
101	1178.00	
	1177.95	
	1177.90	
	1177.85	
	1177.80	
	1177.75	
	1177.70	

Rate	Ask Rate	Ask Qty	LTQ	LTP	% Change	Open	High	Low
80	1179.00	36	1	1179.00	-1.15	1186.15	1192.00	1168.15
						782.00	782.00	759.15
						1093.00	1105.90	1086.20
						0.00	0.00	0.00
						0.00	0.00	0.00
						32.25	32.50	31.45

Price Ladder Order Entry:ACC-EQ

Pro/CLI: CLI Client ID: 0000000000-Q Client Name: dfgfg

Product Type: NRML Order Type: LIMIT

Manual Opposite VWAP

BUY Price: 1178.70 Quantity: WWP: 0.0000 Qty: 0

SELL Price: Quantity: WWP: 0.0000 Qty: 0

Total Available Quantities in Book

For Buying Qty: 84 Price: 1179.0958

For Selling Qty: 1803 Price: 1178.6606

BUY SELL

Fig: Price ladder

How to use Model Basket?

There are two steps to place a model basket order:

1. Add/Delete/Edit Model Basket - Ctrl+Shift+Z
2. Model Basket order Entry – Shift+Alt+Z

Add/Delete/Edit Model Basket

Here one can add, delete or modify model basket from the window shown above. One can also load a predefined group of shares from the option **Load File**.

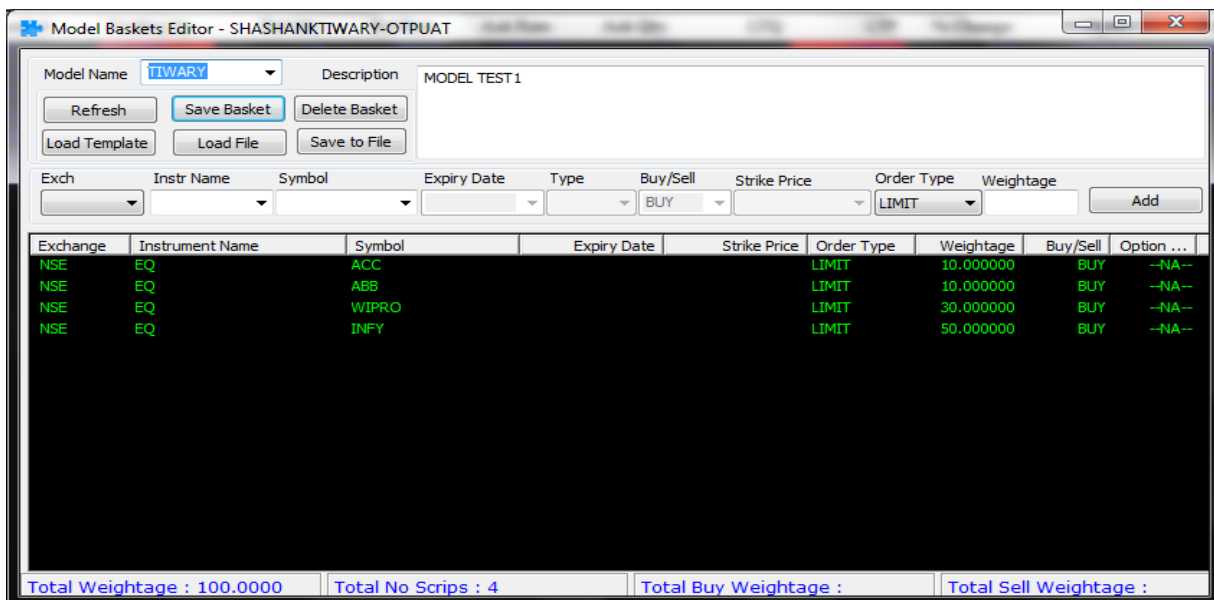


Fig: Add/Delete/Edit Model Basket

Model Basket order Entry

Here one can calculate the the amount distributed on the portfolio and also place the portfolio.

Pro/Cli	Validity	Product T...	Buy/Sell	Quantity	Price	Strike Price	Order Type	Client ID	Weigh...	Cu
CLI	DAY	NRML	B	19	2600.25		LIMIT	0000000012...	50.00	
CLI	DAY	NRML	B	80	373.15		LIMIT	0000000012...	30.00	
CLI	DAY	NRML	B	16	617.60		LIMIT	0000000012...	10.00	
CLI	DAY	NRML	B	8	1179.50		LIMIT	0000000012...	10.00	

Fig: Model Basket order Entry

Alert

How to set alert for a particular condition?

Click on **Set Alert** under **Tools** menu. You can set the alerts for the index as well as for security touching a specified level. Whenever the index or scrip meets the condition specified in the alert it gets triggered, and return a pop-up/E-mail or a SMS.

Fig: Set Alert Window

One can set alert on the following conditions:

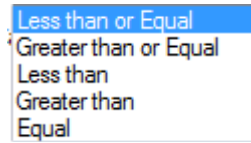


Fig: Drop down list of Alert Me If Value

Following are the steps involved in placing alert:

1. Select **index name**.
2. Set alert condition in **Alert Me If Value Is** option.
3. Enter alert value in **Enter Value** option.
4. Tick for selecting the options.
 1. **Email** To get alert on mail
 2. **TWS** On trading work station.
 3. **SMS** On the provided mobile number.
5. Click on **Set Alert**.

How to modify or cancel alert?

One can modify or cancel alert in **Alert List** Window.

To invoke alert list click on **Alert List** under **Tools** menu.



Fig: Alert list window

How to set order alert?

Click on **Set Order Alert** under **Tools** menu.

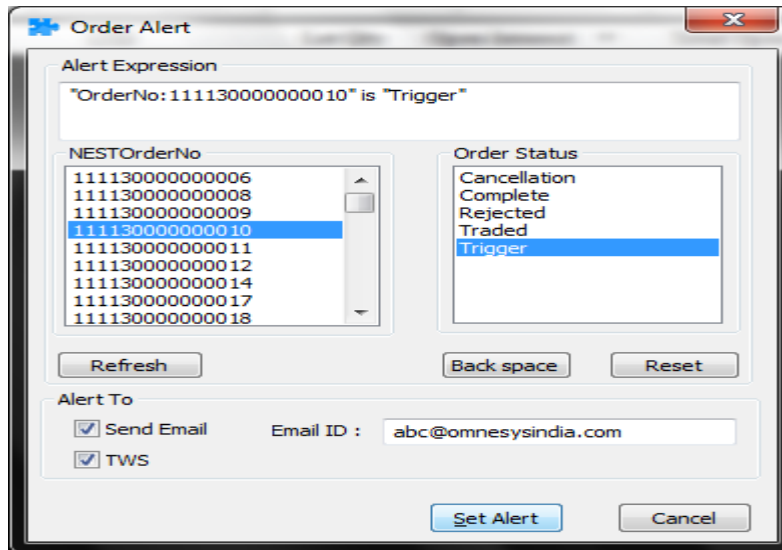


Fig: Order Alert Window

How to modify or cancel order alert?

One can modify or cancel order alert in **Order Alert List** Window.

To invoke alert list click on **Order Alert List** under **Tools** menu.

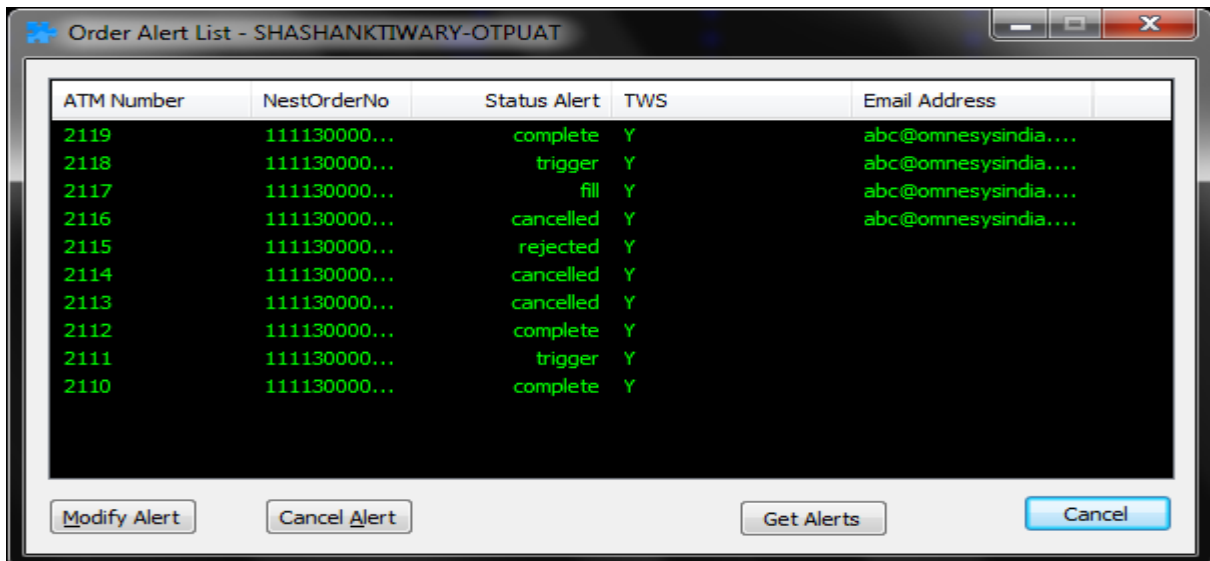


Fig: Order Alert list window