



Omnesys Technologies



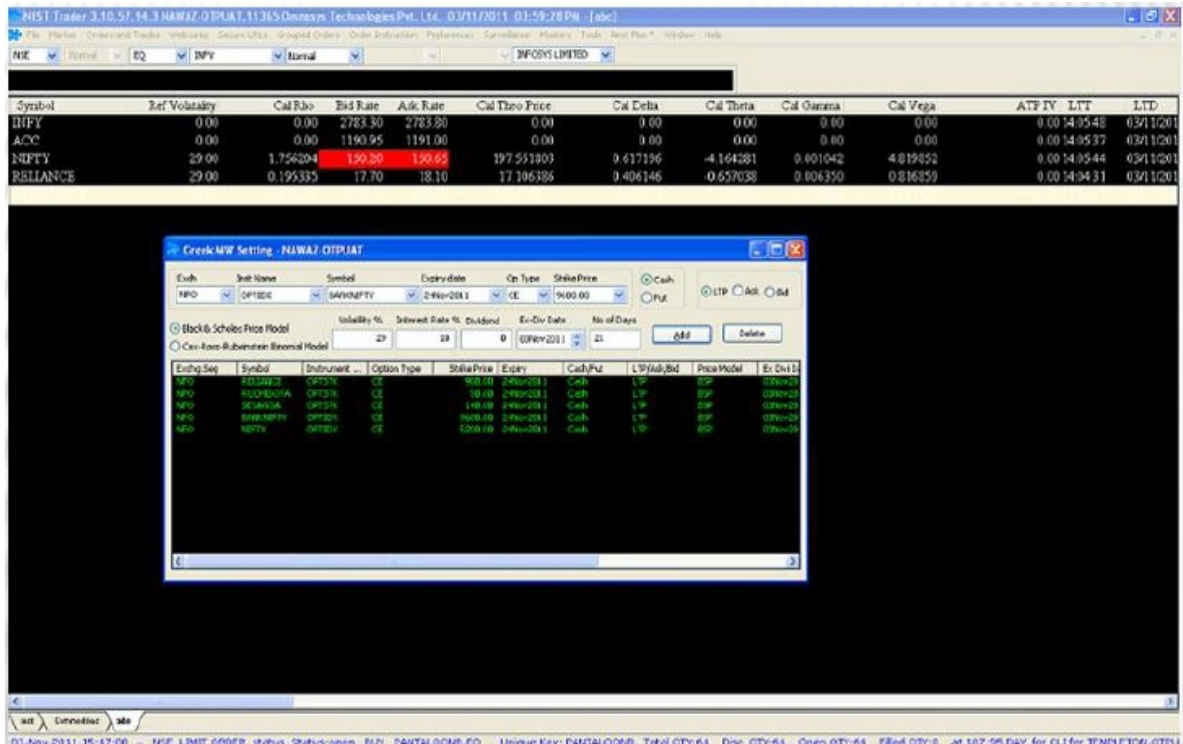
Basic Trading Features In Nest Trader

Table of Contents

Market Watch	3
How to set market watch window ?.....	3
How to remove market watch group from market watch screen ?.....	4
How to Add a particular scrip in market watch ?.....	5
How to remove a particular scrip from market watch ?.....	5
How to rearrange the market watch columns ?.....	5
How to view Snap Quote of a particular scrip.....	6
How to trade in a particular scrip ?.....	6
Where to view our placed orders?.....	7
How to Modify or cancel orders in an order book ?.....	9
How to filter orders in order book?.....	9
How to filter based on account ID or participant code ?.....	10
Where to see the traded orders ?.....	10
How to convert position of a particular trade ?.....	10
How to filter trade in trade book?.....	11
How to view the positions of a particular dealer ?.....	11
How to View Net Wise or day-wise position?.....	12
How to square off from net position window?.....	12
How to convert position in net position window?.....	12
How to enter after market orders?.....	12
How to view the Top N Gainers and Losers ?.....	13
How to view the account balance ?.....	14

Market Watch

This is a basket of your favorite scrips. Here one can see the highs and lows as well as LTP, Bid Price, Ask Price and many more such information which will help traders to trade more efficiently and effectively.



How to set market watch window ?

Click on the market menu and select market watch group settings to invoke group setting window.

Steps Involved:

1. Write Group Name and click on Add New – Name will be added in the Group name.
2. Select exchange type, instrument name, symbol and then click on add. The scrip will be added to the group.
3. Follow the same process and add your favorite stocks to the group.

4. Click on Save Groups to save this group of particular stocks. Stocks saved will be visible in market watch window.
5. You can also update your market watch by adding scrip in the market watch window or by adding in group settings window, in that particular group and click on update groups.
6. You can also load your predefined group to to the market watch window by Importing an option of IMPORT GROUP and vice-verse.
Short-Cut Key F4 is assigned for market watch window.

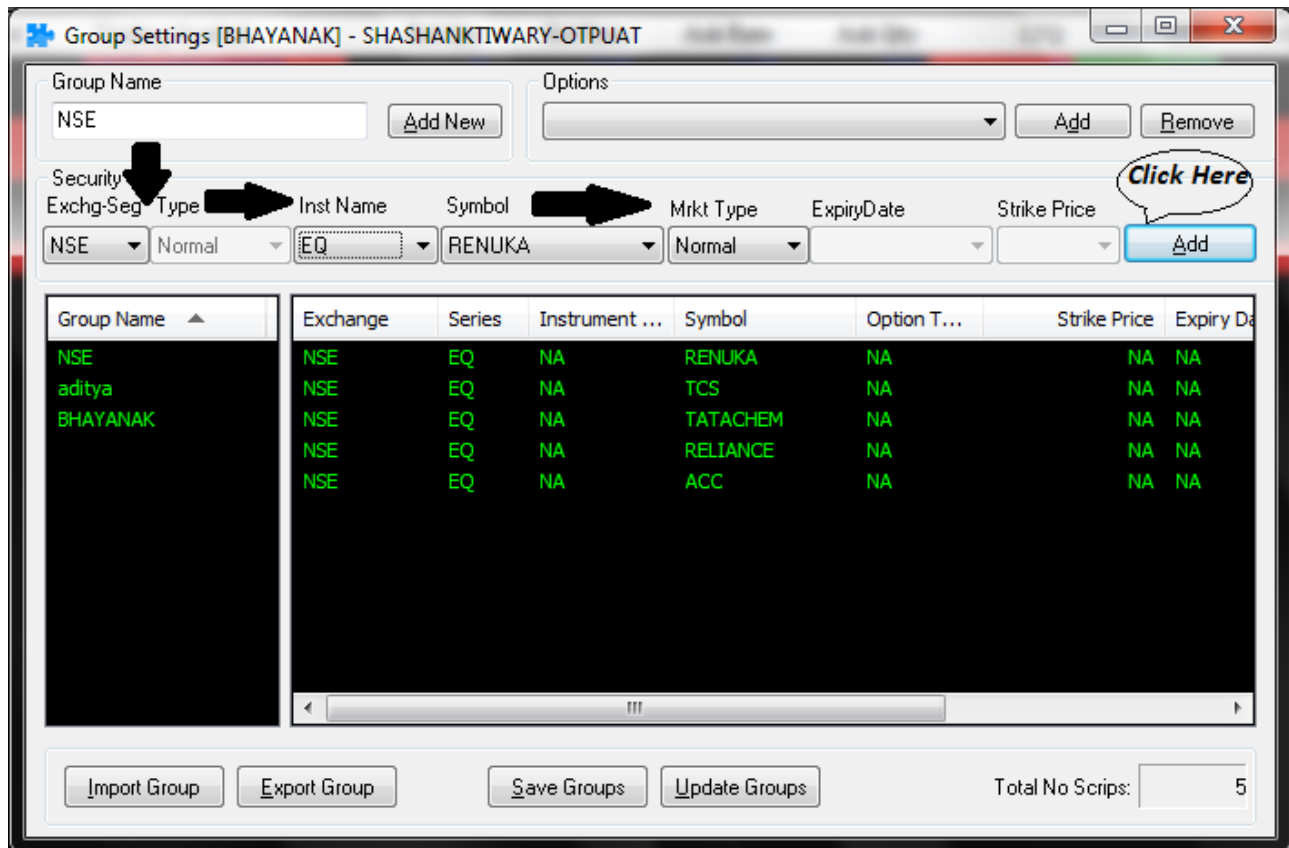


Fig: Market Watch Group Settings

How to remove market watch group from market watch screen ?

Click on market watch group settings under market menu. Select a particular group and press delete key.

NEST Trader 3.10.57.94.4 SHASHANKTIWARY-OTPUAT,11365 Omnesys Technologies Pvt. Ltd. 22/11/2011 02:33:55 PM - [NSE]

File Market Orders and Trades Web Links Secure URLs Grouped Orders Order Instruction Preferences Surveillance Masters Tools Nest Plus * Window Help

S&P CNX Nifty 4826.20(47.85)

NSE Normal EQ 20MICRONS Normal 20 MICRONS LTD

Exchange	Symbol	Trading Symbol	Bid Qty	Bid Rate	Ask Rate	Ask Qty	LTQ	LTP	% Change	Open	High
NFO	NIFTY	NIFTY11DEC5300CE	1050	15.25	15.35	200	100	15.40	0.65	17.00	19.4
NFO	NIFTY	NIFTY11DEC5900CE	850	1.50	1.60	1850	50	1.50	-11.76	1.90	1.9
NFO	NIFTY	NIFTY11NOV5300CE	183150	0.45	0.50	83100	50	0.45	-40.00	0.45	0.7
NFO	NIFTY	NIFTY11NOV5200CE	165950	0.55	0.60	68550	50	0.55	-35.29	0.60	0.9
NFO	NIFTY	NIFTY11DEC5500CE	1700	5.45	5.65	1000	200	5.45	-9.92	7.75	7.7
NFO	NIFTY	NIFTY11DEC5400CE	600	8.60	8.65	1250	50	8.65	-7.49	11.00	14.8
NFO	NIFTY	NIFTY11DEC6000CE	3750	1.30	1.35	150	50	1.35	-3.57	1.25	1.5

aditya NSE BHAYANAK

22-Nov-2011,14:30:15 -- NFO MARKET ORDER fill Status:complete BUY NIFTY11NOVFUT Total QTY:50 Disc. QTY:0 Open QTY:0 Filled QTY:50 at Mark

Fig: Market Watch Window

How to Add a particular scrip in market watch ?

Enter the required scrip name in the following window and press enter

Scrips Bar - NSE

NSE Normal EQ ACC Normal ACC LIMITED

Fig: Scrip Bar to Add Scrip

How to remove a particular scrip from market watch ?

Select a particular scrip and press delete key.

How to rearrange the market watch columns ?

Right click on market watch profile header and select from the **drop down list** which includes (Select reposition columns for repositioning the column):

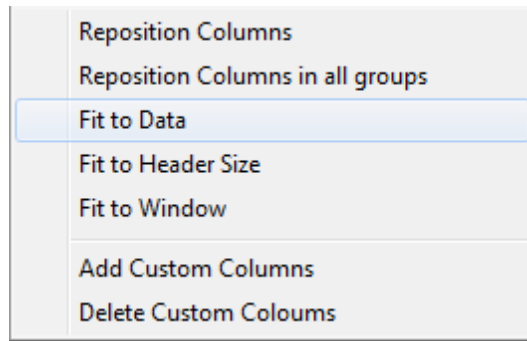


Fig: Drop down list

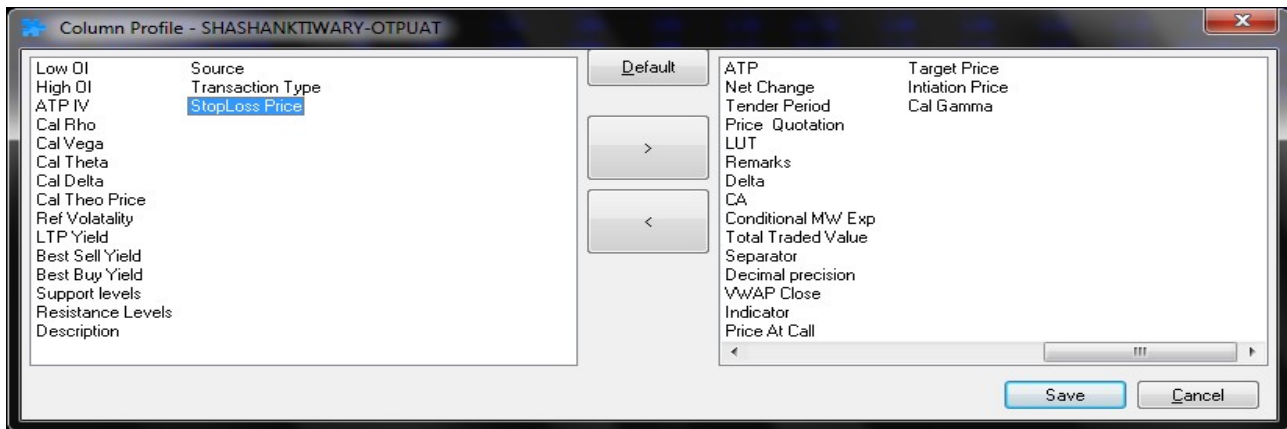


Fig : Column Profile window to reposition column

How to view Snap Quote of a particular scrip.

Double click or F6 on a particular scrip



Fig: Snap Quote Window

How to trade in a particular scrip ?

Buy : Short cut assigned **F1** or can be invoked through **“+”** key and uses to place Buy Order for selected Scrip.

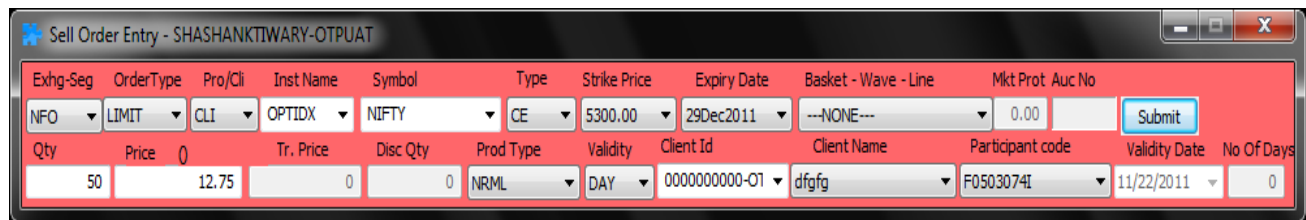


Exhg-Seg	OrderType	Pro/Cli	Inst Name	Symbol	Type	Strike Price	Expiry Date	Basket - Wave - Line	Mkt Prot	Auc No
NFO	LIMIT	CLI	OPTIDX	NIFTY	CE	5300.00	29Dec2011	---NONE---	0.00	

Qty	Price	Tr. Price	Disc Qty	Prod Type	Validity	Client Id	Client Name	Participant code	Validity Date	No Of Days
50	13.65	0	0	NRML	DAY	0000000000-01	dfgfg	F0503074I	11/22/2011	0

Fig: Buy Order Window

Sell : Short cut assigned **F2** or can be invoked through “-” key and uses to place Sell Order for selected Scrip.



Exhg-Seg	OrderType	Pro/Cli	Inst Name	Symbol	Type	Strike Price	Expiry Date	Basket - Wave - Line	Mkt Prot	Auc No
NFO	LIMIT	CLI	OPTIDX	NIFTY	CE	5300.00	29Dec2011	---NONE---	0.00	

Qty	Price	Tr. Price	Disc Qty	Prod Type	Validity	Client Id	Client Name	Participant code	Validity Date	No Of Days
50	12.75	0	0	NRML	DAY	0000000000-01	dfgfg	F0503074I	11/22/2011	0

Fig: Sell Order Window

Following are the Terms used in Oder placing window :

1. Exhg-seg: Exchange Name for which you want to place order.
2. Order Type : Limit or Market
3. Instrument Name : Need to select in which segment of the exchange you want to trade like Option Index (OPDIDX) etc.
4. Symbol: Need to select the symbol in which you want to trade.
5. Qty: Need to specify the number of scrips.
6. Product Type :
 1. NRML
 2. MIS
7. Validity :
 1. Day : This order will be valid for whole day.
 2. IOC: This order is for immediate execution otherwise it will be automatically canceled.

Where to view our placed orders?

Placed orders can be viewed in order book, which is invoked through F3.

The Order Book is divided into two frames:

Open orders

Completed orders

Order Book - SHASHANKTIWARY-OTPUAT

Open Orders: 8 Completed Orders: 270

Display all Orders Show Filters Filter Orders

Open Orders											
Exhg. Seg	Us...	AccountId	Particip...	Bu...	Trading Sy...	Total Qty	Price	Status	Rejection R...	NestOrderNo	Nest UpdateTime
NSE	NTO...	0091-OTPUAT	11365	BUY	ACC-EQ	1	110.00	open		1111240000...	24-Nov-2011 10:53:06
NSE	NTO...	0000000000-...	0017093...	SELL	ABB-EQ	3600	16.00	open		1111240000...	24-Nov-2011 10:28:04
NSE	NTO...	00066-OTPUAT	897	SELL	ACC-EQ	12	1000.00	open		1111240000...	24-Nov-2011 10:23:24
NSE	NTO...	00066-OTPUAT	897	SELL	ACC-EQ	12	1000.00	open		1111240000...	24-Nov-2011 10:23:19
NSE	NTO...	00066-OTPUAT	897	SELL	ACC-EQ	12	1000.00	open		1111240000...	24-Nov-2011 10:23:17
NSE	ICDS...	00011-OTPUAT	NIUEI	SELL	ABB-EQ	80	55.00	open		1111240000...	24-Nov-2011 09:09:07

Completed Orders											
Exhg. Seg	Us...	AccountId	Particip...	Bu...	Trading Sy...	Total Qty	Price	Status	Rejection Reason	NestOrderNo	
NSE	SHA...	POOJATEST-OTPUAT		SELL	RELIANCE-EQ	1	762.10	rejected	RMS:User not enabled on product	1111240000...	
NFO	OTP...	ABCA002	11413	SELL	NIFTY11NOV...	50	0.00	complete		1111240000...	
NSE	SHA...	POOJATEST-OTPUAT		BUY	ACC-EQ	1	1113.55	rejected	RMS:User not enabled on product	1111240000...	
NSE	SHA...	POOJATEST-OTPUAT		BUY	TCS-EQ	1	1050.00	rejected	RMS:User not enabled on product	1111240000...	
NFO	SHA...	POOJATEST-OTPUAT		BUY	NIFTY11DEC...	50	7.35	rejected	RMS:User not enabled on product	1111240000...	
NFO	SHA...	POOJATEST-OTPUAT		BUY	NIFTY11DEC...	50	1.10	rejected	RMS:User not enabled on product	1111240000...	
NFO	SHA...	POOJATEST-OTPUAT		BUY	NIFTY11DEC...	50	4.50	rejected	RMS:User not enabled on product	1111240000...	
NFO	SJP...	0000000000-OTPUAT	E0503074E	BUY	BANKNIFTY1...	25	1297.00	rejected	exchange user id for the user is invalid	1111240000...	

Display Modify Cancel Exit Cancel All

BQ : 5 BV : 352.00 SV : 37794.00 SQ : 75 NV : 37442.00 NQ : -70

The Orders which has not found the match yet will be there in Open Orders Frame where as the traded orders can be seen in Completed Orders Frame. User can also see all cancel or rejected trade along with the reason in Completed Orders Frame.

Following options are there under right click :

Order History	Shift+F12
Set Order Alert	
Set Security Alert	
Grid Lines	Shift+G
Write To Excel	Shift+E
Copy to ClipBoard	Ctrl+C
Completed Orders	Alt+7
Cancelled Orders	Alt+8
Rejected Orders	Alt+9
Cancelled After Market Orders	
Show RMS Rejection List	
All Orders	Alt+0
Link Order	
Customize	Ctrl+Shift+C

Fig: Short Cut Keys are provided in the right hand side of the option

1. Order History: Will show the history of selected placed order along with the time. The Order alert can be set, it will return a pop-up as soon the alert get triggered.
2. Set Security Alert: It will return a pop-up if the security with the given alert price has been triggered.

3. Grid Lines: Will draw the grid lines inside the window between rows and columns.
4. Write To Excel: This option will allow user to write all his Orders to Excel file.
5. Copy To Clip Board: It will copy the items to clip board, user can paste wherever he wants.
6. Open Orders: Once Selected will show the open orders.
7. Open Pending Orders: if this option is selected will show only open pending orders.
8. Validation Pending Orders: This option will return only the open orders which are not yet validated.
9. Frozen Orders: If Frozen orders option selected only Freeze orders will show in the window.
10. Acknowledged Orders: Once the option selected only acknowledged Orders will be displayed (the orders which have placed but only have the status as "put order request received").
11. After Market Orders- Fresh: It will return the open After Market orders placed but which are not modified.
12. After Market orders- Modified: It will return only Modified After Market Orders.
13. All orders: If this option is selected, it will show all open orders without any condition.
14. Link Orders: User can link the selected order to the Basket. Once selected following window will appear; where he has to fill the basket, wave and line Id. Once he fills all these fields the order will linked to the assigned basket.
15. Customize: User can change the appearance of dialog with the help of this option.

How to Modify or cancel orders in an order book ?

Click On the modify or cancel options respectively to modify or cancel any open order present in the order book.

You can cancel all open orders at one go through **Cancel All** option.

How to filter orders in order book?

Click on the **Order Filter** present in the order book.

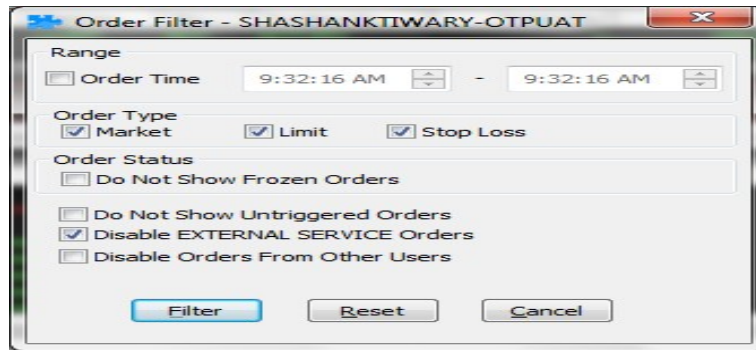


Fig: Order Filter Window

How to filter based on account ID or participant code ?

Click On the **Show Filter** option present in the order book.

Where to see the traded orders ?

All placed orders which have been traded can be seen in trade book dialog. Short cut to invoke trade book is F8.

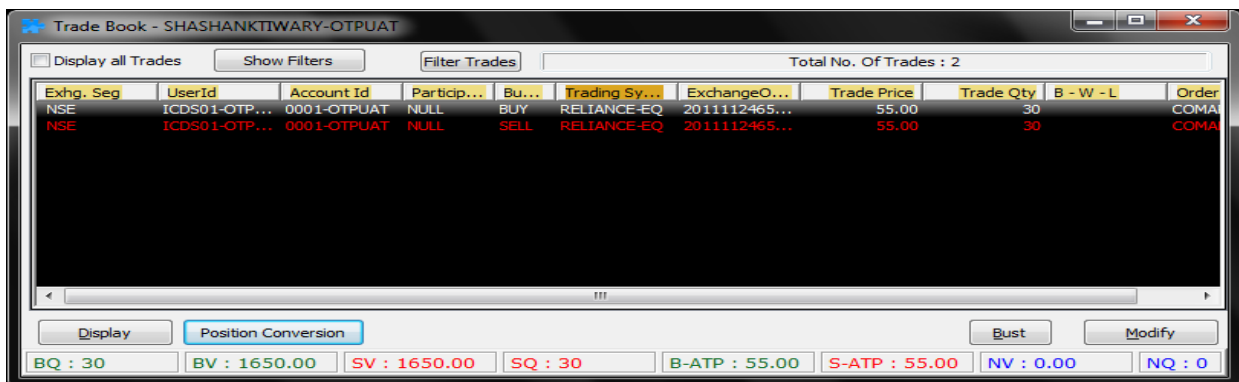


Fig: Trade Book

How to convert position of a particular trade ?

Click on the **Position Conversion** option in the Trade Book.

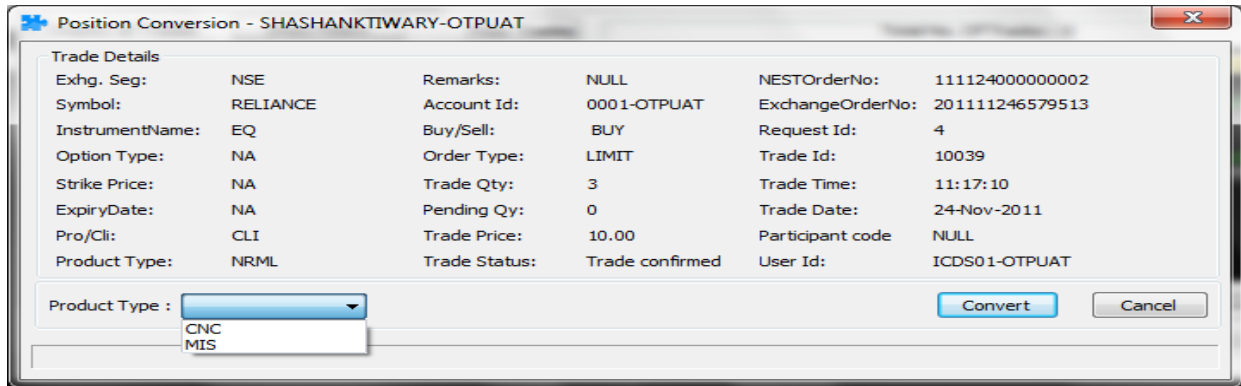
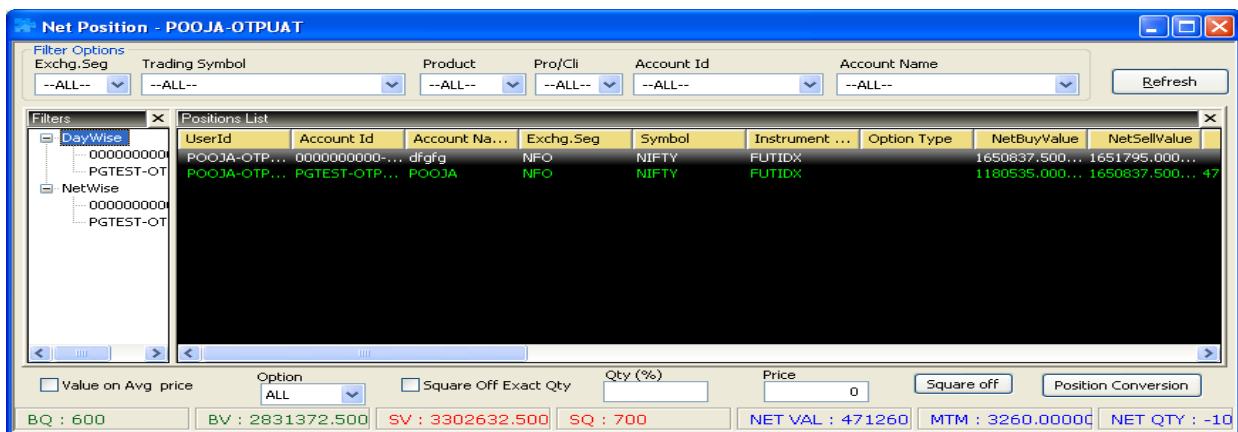


Fig: Position Conversion Window

How to filter trade in trade book?

Click on filter trades to open a separate filter window in trade book.
If you want filter in the trade book window then click on show filters.

How to view the positions of a particular dealer ?



You can view this by opening Net Position window through Alt + F6.

Fig: Net Position Window

How to View Net Wise or day-wise position?

By default Day-wise position is being displayed. By selecting the Net-wise option, you can view the carry forward positions and day-wise positions.

How to square off from net position window?

Tick On **Square-off Exact Qty** to square-off for a particular position quantity wise. If you want to square-off the % of total number of invested shares then uncheck the box and write the % of the total invested shares you want to squared off. After writing click on the square-off option.

How to convert position in net position window?

Select a position from the list and click on the **Position Conversion** option.

How to enter after market orders?

Ans: Click on **After Market Orders** under **Orders and Trades** menu.

After Market Orders	▶	Buy Order Entry	Ctrl+F1
Cover Order Entry	▶	Sell Order Entry	Ctrl+F2
Bracket Order Entry	▶	Basket Orders	Alt+Shift+O

Fig: After Market Order Window

Exhg-Seg	OrderType	Pro/Cli	Inst Name	Symbol	Type	Strike Price	Expiry Date	Basket - Wave - Line	Mkt Prot	Auc No	Submit
NSE	LIMIT	CLI	EQ	RELIANCE				---NONE---	0.00		

Qty	Price	Tr. Price	Disc Qty	Prod Type	Validity	Client Id	Client Name	Participant code	Validity Date	No Of Days
1	773.50	0	0	NRML	DAY	POOJATEST-OT	poojatest		11/24/2011	0

Fig: After Market Orders-Buy

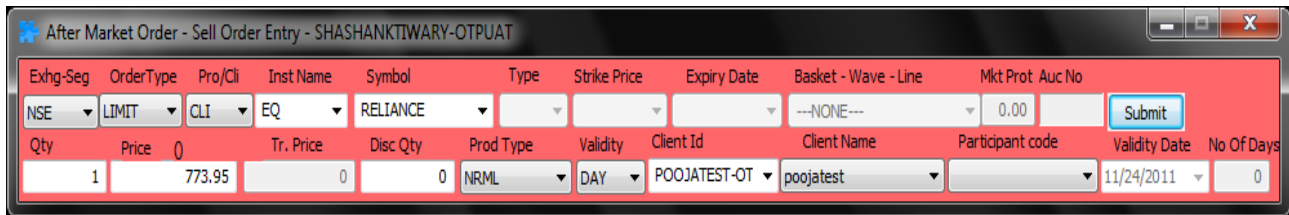


Fig: After Market Orders-Sell

How to view the Top N Gainers and Losers ?

Click on **Top N** under the menu **Market**.

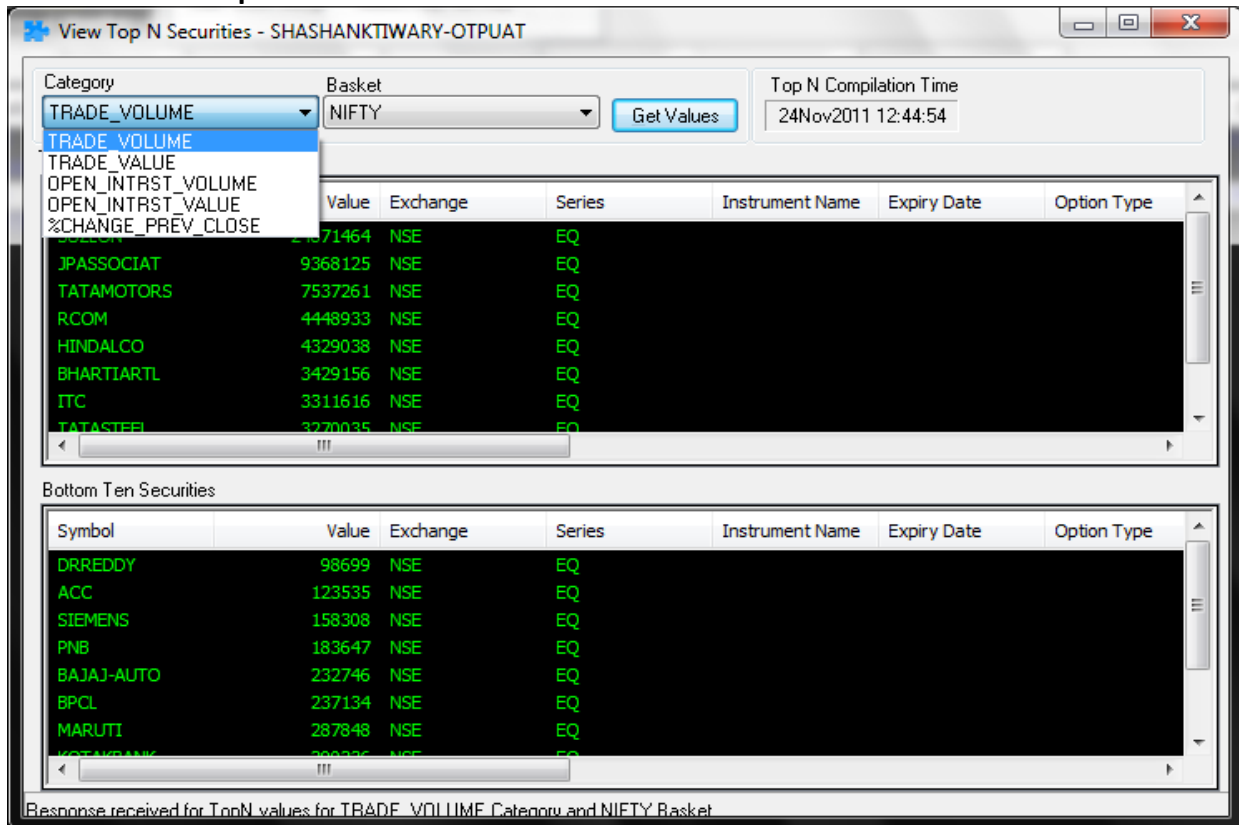


Fig: Top N window

You can view the top ten gainers or losers on the basis of traded volume, value, open interest volume, open interest value and % change on previous close price.

You can view top n for the following:

- NIFTY
- BSE_A_GROUP
- BSE_B_GROUP
- BSE_OPEN_MARKET
- JR.NIFTY
- NCDEX_FO_OPEN_MARKET
- NIFTY
- NSE_OPEN_MARKET

Fig: List of Indices

How to view the account balance ?

Select **RMS limit** under **Surveillance** menu and click on **Client Cash Credit**.

The screenshot shows a window titled "RMS CASH CREDIT - SHASHANKTIWARY-OTPUAT". It contains several input fields for account information and a table of ledger balances.

Account ID	Account Name	Level	NEST Order	Request ID
0000000000-OTPUAT	dfgfg	All-All-All-All	-NA-	-NA-

Item	Value
Cash Margin	2,589,641,220.00
Collateral Value	NA.
Direct Collateral Value	0.00
Adhoc Margin	0.00
PayIn Amount	NA.
Branch AdHoc	NA.
Notional Cash	0.00
Branch Adhoc To Client	NA.
VAR Margin	0.00
ELM	0.00
Adhoc Scrip Margin	0.00
Scrip Margin	0.00
Basket Scrip Margin	0.00
Gross Exposure/Multiplier	0.00 / 1.00
Turnover/Multiplier	0.00 / 1.00
Value in Del	NA.
Span Margin	0.00
Exposure Margin	0.00

Category	Value
Credit	2,589,641,220.00
Debit	0.00
Net	2,589,641,220.00

Fig: Accounts Ids Ledger balance