



**Omnesys Technologies Private  
Limited.**



**NEST**  
**An ECO system for securities**

**Preference Settings**

**December 2011**

**Version 1.0.0.0**

## PREFERENCE SETTINGS

### Document Information

DOCUMENT CONTROL INFORMATION	
AUTHOR	Haripriya
DOCUMENT	
VERSION	1.0.0.0
Reviewer	Prabhakar Kudva
KEYWORDS	

## Contents

HOW TO CHANGE APPEARANCE SETTINGS? .....	4
HOW TO SET PREFERENCE FOR BASKET MANAGER? .....	5
HOW TO SET PREFERENCE FOR BASKET ORDER? .....	6
HOW TO SET PREFERENCES FOR SOME PARTICULAR EVENTS? .....	7
HOW TO SET PREFERENCES FOR GENERAL CATEGORY?.....	8
HOW TO SET PREFERENCES FOR MARKET WATCH CATEGORY? .....	9
HOW TO SET PREFERENCES FOR ORDER CATEGORY? .....	10
HOW TO SET PREFERENCES FOR RMS CATEGORY? .....	11

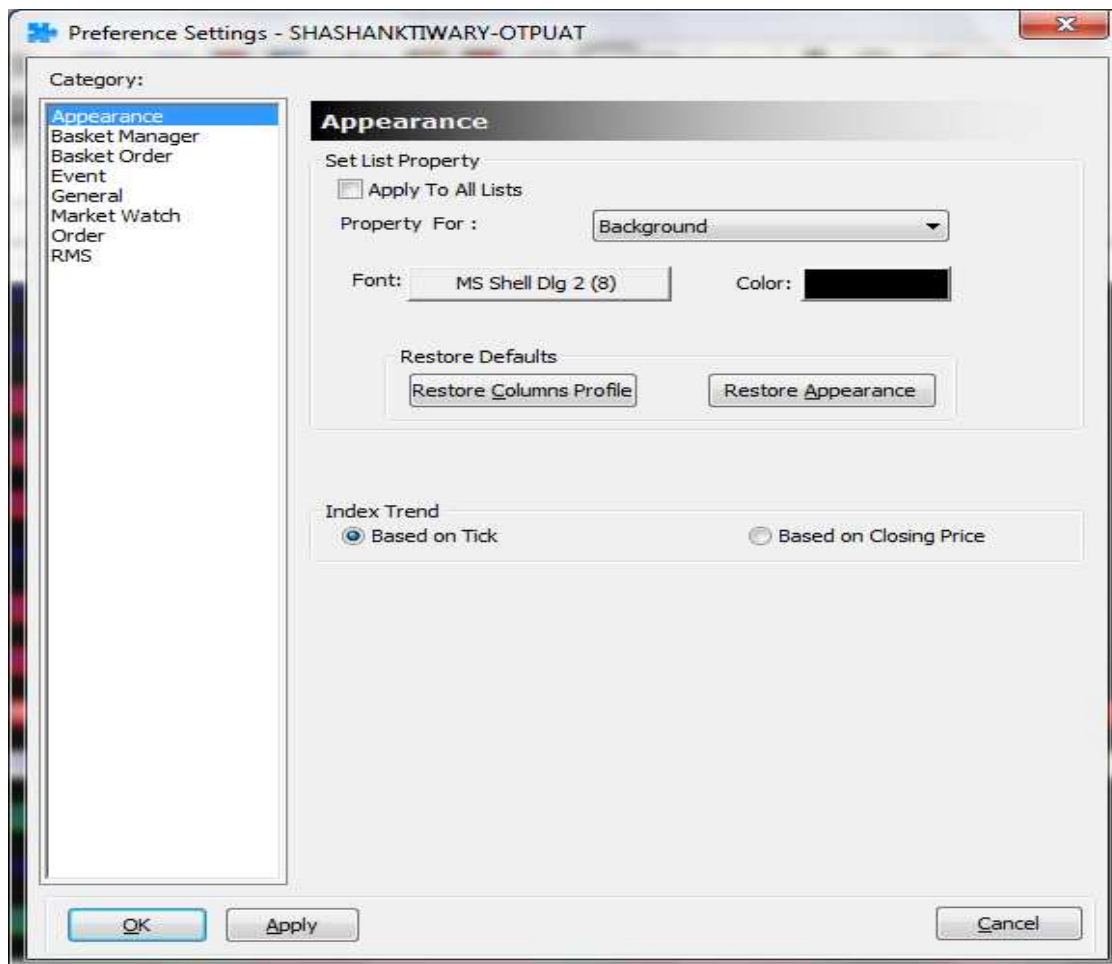
## PREFERENCE SETTINGS

### How to change appearance settings?

Click on **Ctrl+P** to invoke **Preference Setting** window and then click on **Appearance**. One can click on **Property For** to make changes in **Background** or **Foreground**. One can change:

1. Front size of the scrips in market watch
2. color
3. Index trend based on ticks or closing price

Click on **Apply** to make changes.

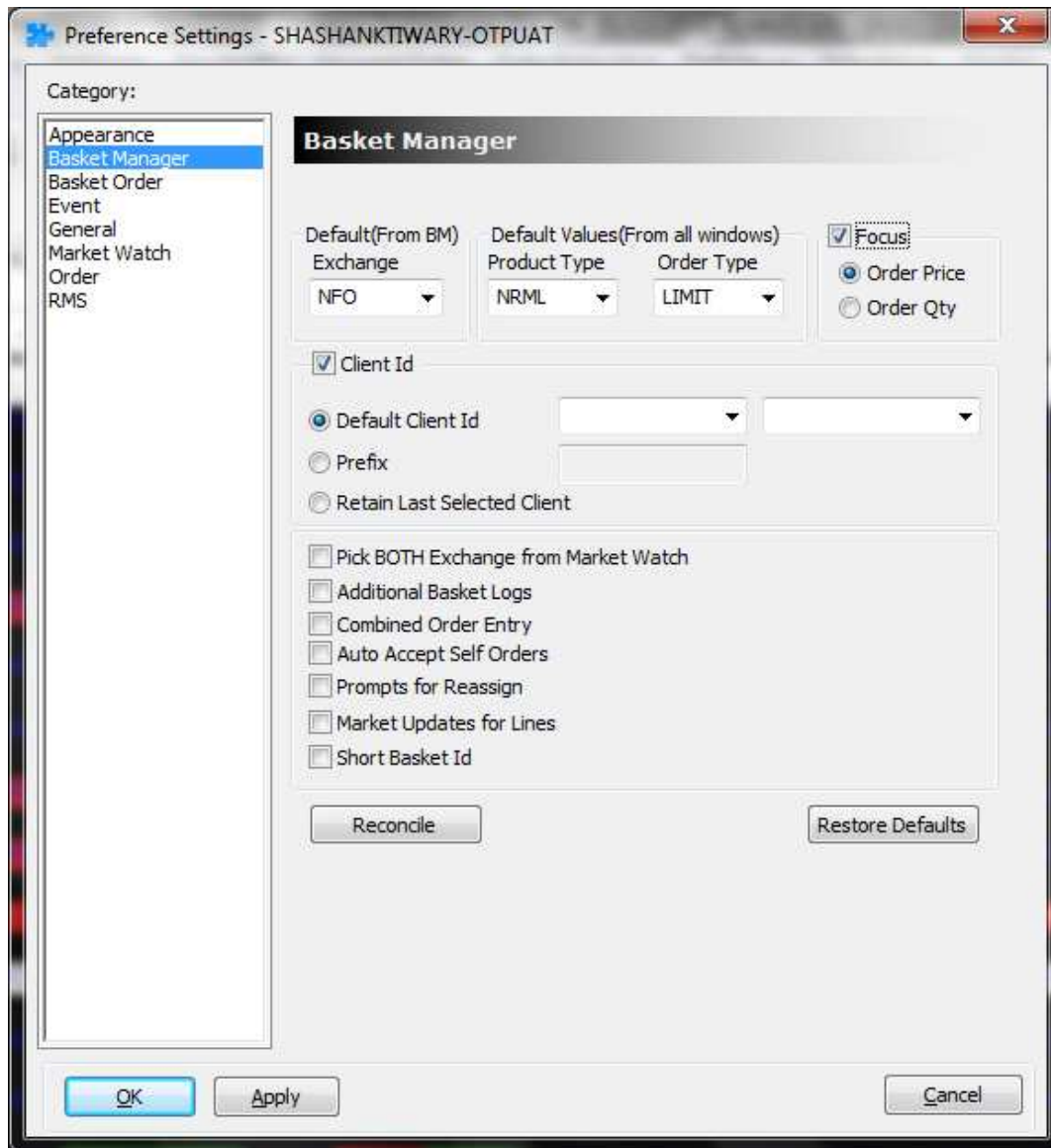


**Fig: Preference setting window**

## PREFERENCE SETTINGS

### How to set preference for Basket Manager?

Click on **Ctrl+P** to invoke **Preference Setting** window and then click on **Basket Manager**. One can set the **Focus** on either **Order price or quantity** and also can set a **Default client id**. One can also tick the required preferences.

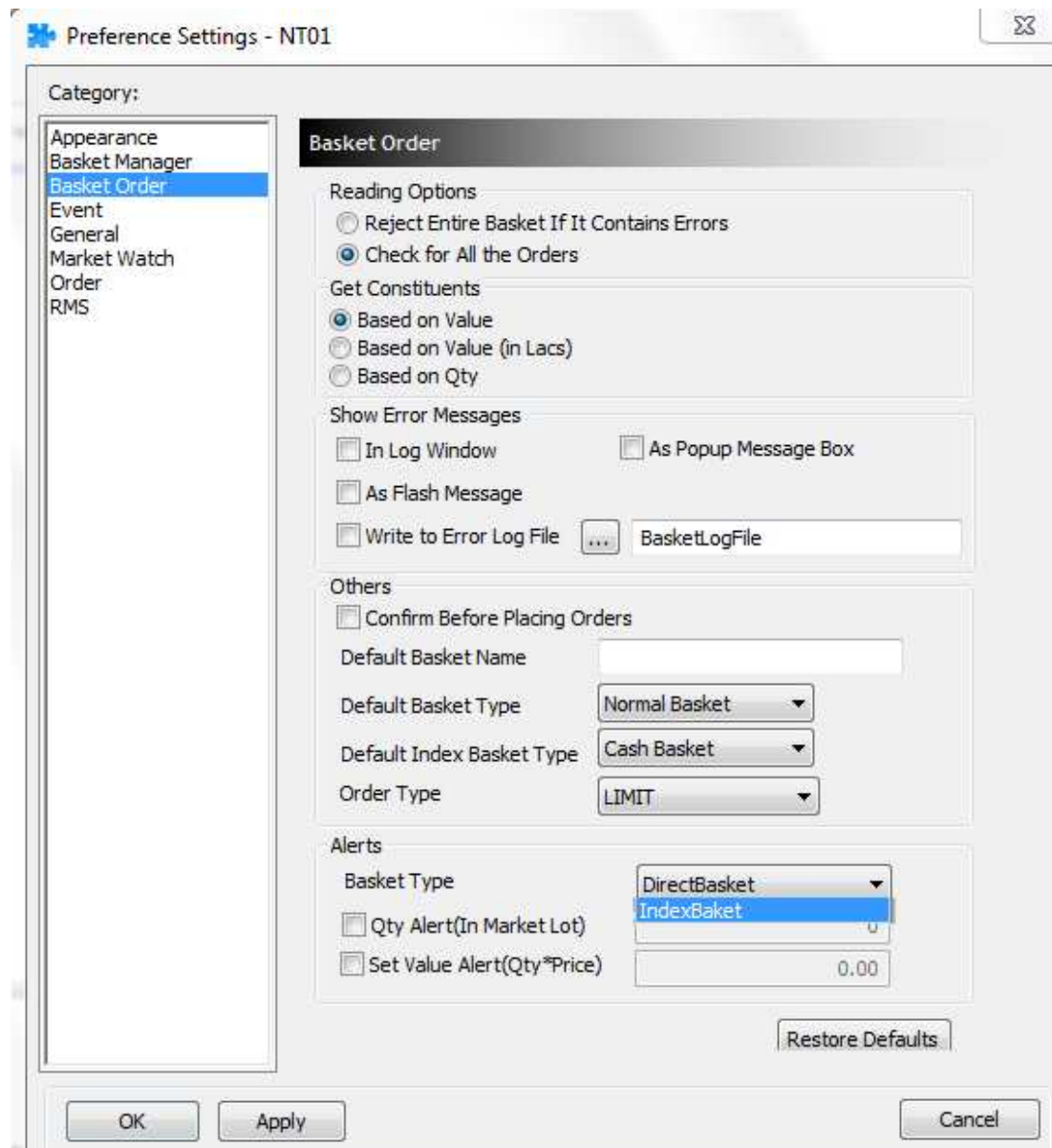


**Fig: Basket Manager Window**

## PREFERENCE SETTINGS

### How to set preference for Basket Order?

Click on **Ctrl+P** to invoke **Preference Setting** window and then click on **Basket Order**. One can set the **Reading option, Get Constituents, Show Error Message, Others** and also can set an **Alert** based on the selected Basket type.



**Fig: Basket Order Window**

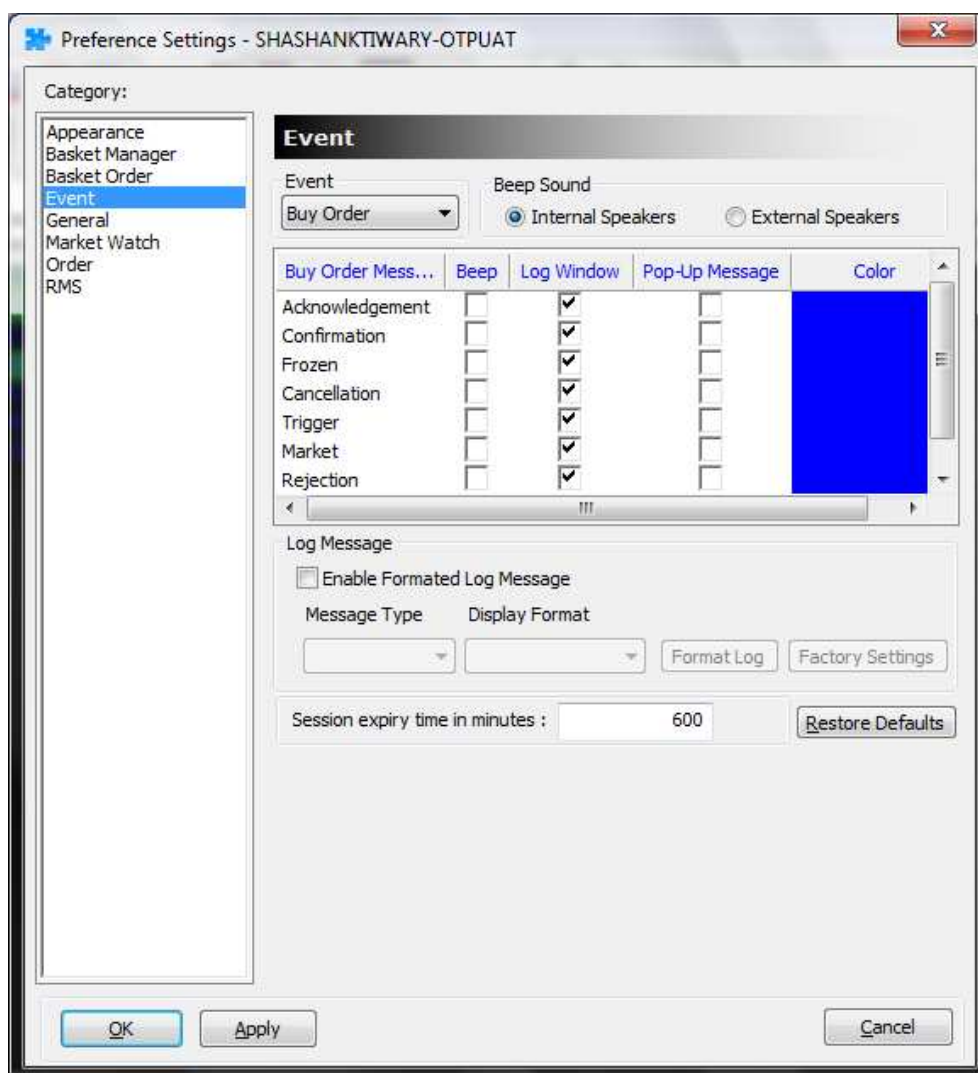
## PREFERENCE SETTINGS

### How to set preferences for some particular events?

Click on **Ctrl+P** to invoke **Preference Setting** window and then click on **Event**. You can get the event message in the form of **Beep**, **Log Window** or **Pop-up message**.

One need to tick the proper boxes according to the preferences. One can also change the **Color** of the event message.

Dealer can select the **Beep Sound** on either Internal Speaker or External Speaker and also they can set their own **Log format**. Can set the **Session Expiry time**.



**Fig: Event Preference Setting Window**

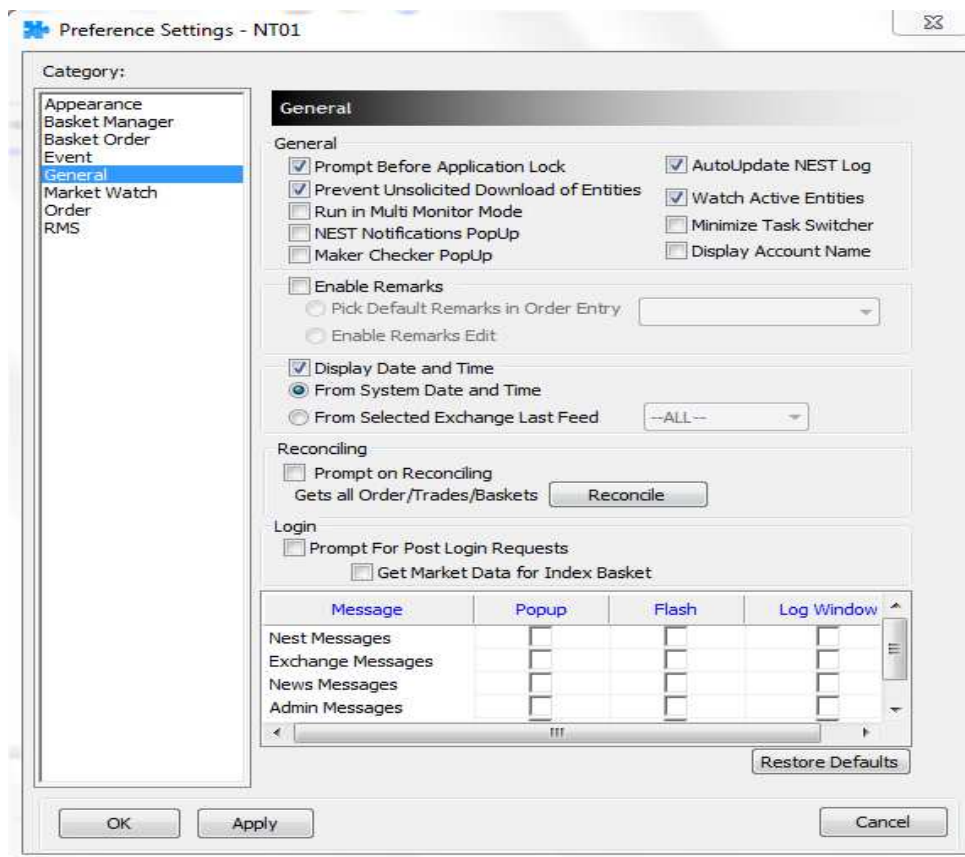
## PREFERENCE SETTINGS

For following **Events** one can set preferences:

- Buy Order
- Sell Order
- Buy Trade
- Sell Trade
- Excercise
- Spread ShortRoll
- Spread LongRoll

### How to set preferences for General Category?

Click on **Ctrl+P** to invoke **Preference Setting** window and then click on **General**. Dealer can select the **General** option, can set the Remarks from **Enable Remark**, Set the date & time from **Display Date and Time, Reconciling, Login** and can set the **Messages** in whichever format to wanted to receive



**Fig: General Preference Setting Window**



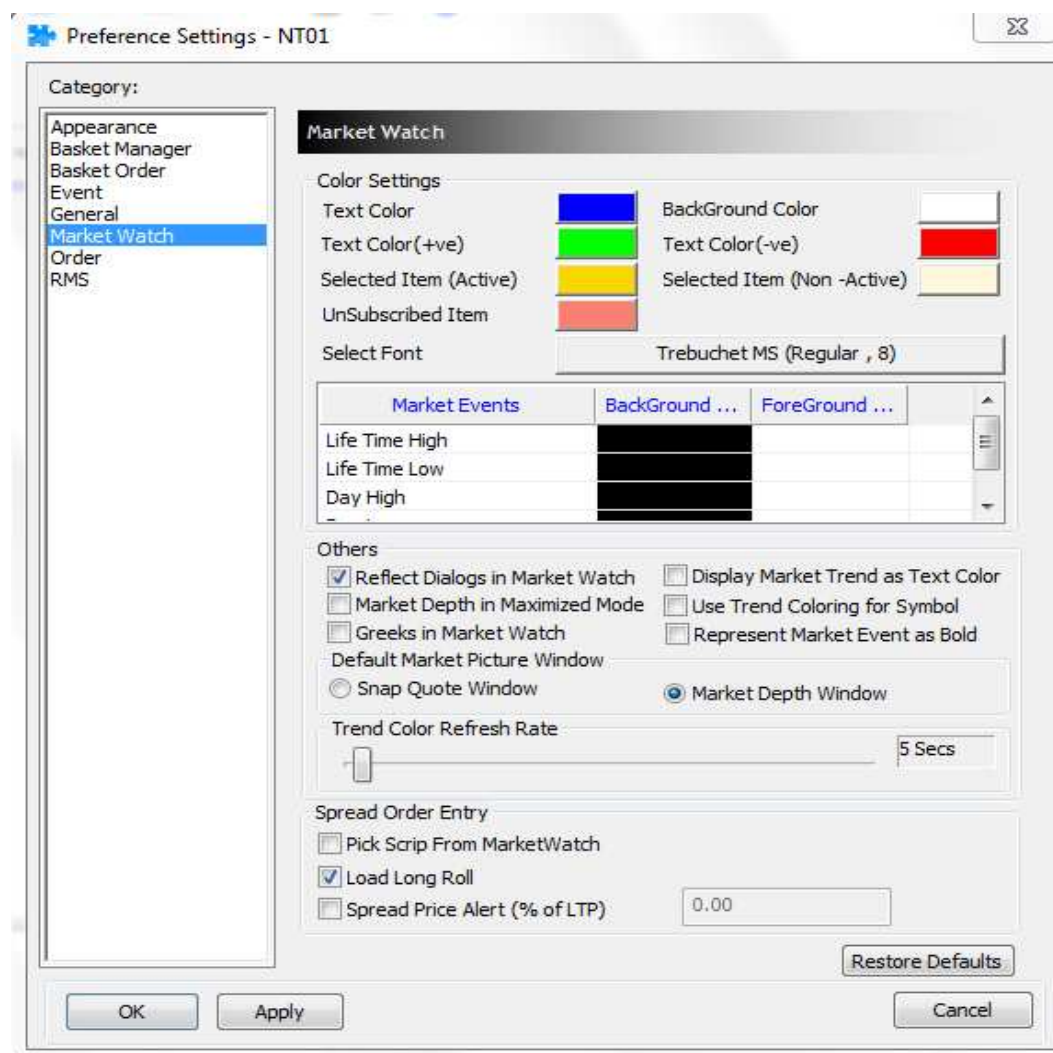
## PREFERENCE SETTINGS

### How to set preferences for Market Watch Category?

Click on **Ctrl+P** to invoke **Preference Setting** window and then click on **Market Watch**. Dealer can set the **color** settings, **font** and can set the **Market Events** color too.

**Default Market Picture** can be selected. Others option can be used can set the **Trend Color refresh rate**

Dealer Can set the **Spread Order Entry** also.



**Fig: Market Watch Preference Setting Window**

## PREFERENCE SETTINGS

### How to set preferences for order Category?

Click on **Ctrl+P** to invoke **Preference Setting** window and then click on **Order**. Dealer can set the settings based on the **Exchange Specific** the **Order Qty, Default Values, Alerts & Order Prompts**

Can set the **Default client id** based on the Exchg Seg and Trans Type

Can set the default **focus** and **Miscellaneous** too for Order entry dialog.

The screenshot shows the 'Preference Settings - NT01' window with the 'Order' category selected. The window is divided into several sections:

- Category:** A list on the left includes Appearance, Basket Manager, Basket Order, Event, General, Market Watch, Order (selected), and RMS.
- Order:**
  - Exchange Specific Settings:** Exchg Seg is set to 'NSE'. Order Qty has checkboxes for 'Pick the Derivative Market Lot', 'Pick from Market Watch', and 'Set No. Of Market Lots' (checked, value 1).
  - Default Values:** PCode is 'Default', Pro/Cli is 'CLI', Product Type is 'NRML', Order Type is 'LIMIT', and Validity is 'DAY'.
  - Alerts:** Four checkboxes for Qty Alert, Price Alert, Set Value Alert, and Trigger Price Alert, each with a corresponding input field (0, 0.00, 0.00, 0.00).
  - Order Prompts:** Checkboxes for Fresh, Modification, and Cancellation.
  - ClientId:** Exchg Seg is 'ALL'. Radio buttons for 'Default Client Id', 'Prefix', 'Prefix With last selected client', and 'Retain Last Selected Client'.
  - Miscellaneous:** Checkboxes for 'Enable Price Range for Order Entry Window', 'Pick Order Instruction Line from Market Watch', 'Single Click To Place Order', 'Close Order Entry Dialog After Placing Order', 'Set Default Disclosed Qty (% of Order Qty)', 'Check for Order Qty During Modification of Order', 'Order Alert for Groups', and 'Scrip Code Prefix'. A 'Focus' section has radio buttons for 'Order Qty' (selected) and 'Order Price', with an input field for '0.00'. A 'Restore Defaults' button is also present.

Buttons at the bottom include OK, Apply, and Cancel.

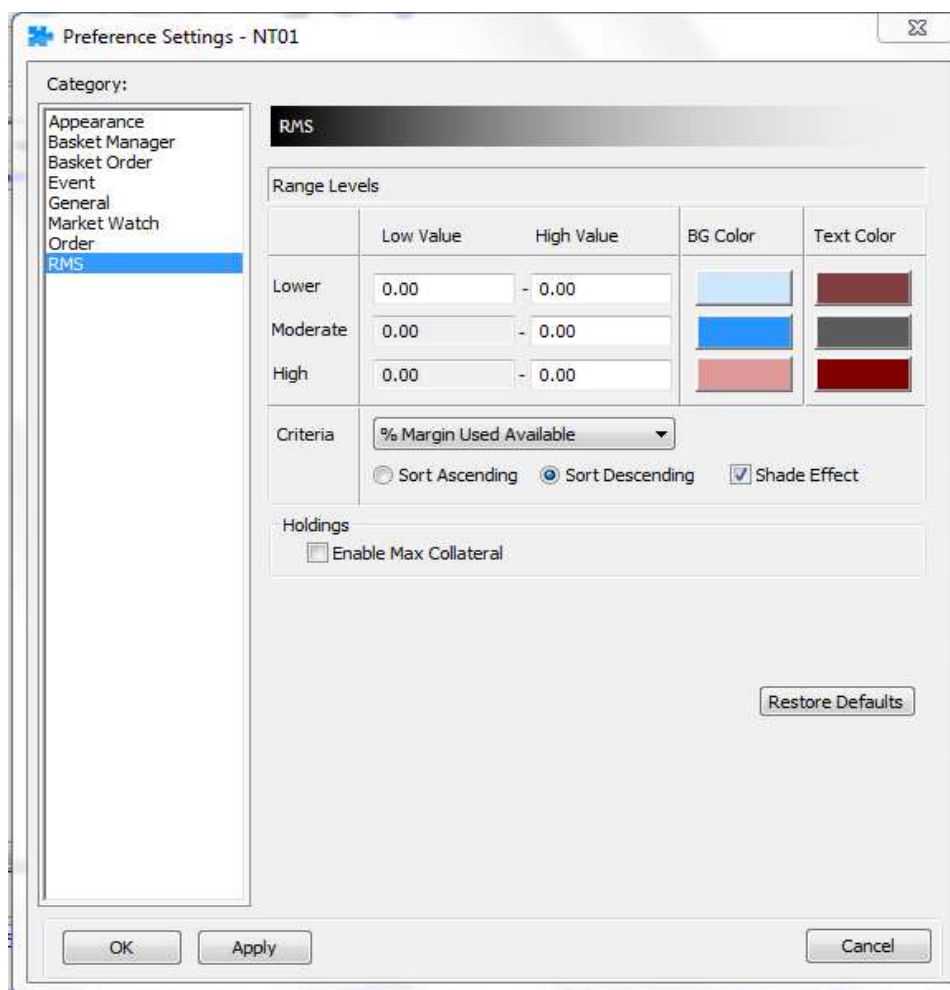
**Fig: ORDER Preference Setting Window**

### How to set preferences for RMS Category?

Click on **Ctrl+P** to invoke **Preference Setting** window and then click on **RMS**. Based on the Range levels set, dealer can set the colors on selected criteria.

The values can display in sorted manner(Ascending/Descending), can use the Shade effect.

Holding to display dealer can use.



**Fig: RMS Preference Setting Window**

**End of Document**